

B CANADIAN Brown Swiss & Braunvieh Association

February 2010

Canadian Brown Swiss and Braunvieh Association Annual General Meeting Hosted by Manitoba Brown Swiss, Manitoba March 25th – 28th, 2010

Thursday, March 25th	-9:00 a.m. Board of Directors Meeting -7:30 p.m. Wine & Cheese Reception
Friday, March 26th	-8:30 a.m. Registration Annual General Meeting -9:00 a.m. Annual General Meeting -6:00 p.m. Banquet and Awards
Saturday, March 27th	Elite Cattle & Embryo & Show Prospects Sale/Dinner in Wawanesa
Sunday, March 28th	Farm Tours

For more information about hotel and meeting call Corina, 204-268-4478.

For more information about sale call Rejean Mathys 204-824-2590 or Armin Dueck 204-377-4766

Victoria Inn, Winnipeg, 204-786-4801

- A block of rooms have been reserved under Canadian Brown Swiss Association
- Complimentary 24 hr/day airport shuttle
- Hotel is very close to the airport



Early February

On – Victoria, Lennox & Addington, Frontenac, Hastings, Waterloo
Qc – Brome, Richmond, Missisquoi
Qc – mid round: Riviere Du Loup, Temiscouata, Rimouski, Matapedia, Matane, Bonaventure PE, NB, NS, NL

Mid February

On – Prince Edward
Qc – Compton, Stanstead
Qc – mid round: Arthabaska, Megantic, Wolfe

Late February

On – Wellington, Northern Ontario
On – mid round: Oxford
Qc – Sherbrooke
Qc – mid round: Lotbiniere, Yamaska
Saskatchewan

Early March

On – Thunder Bay, Dundas, Stormont, Glengarry, Wentworth, Brant

Get Your Brown Swiss Classified Classification Schedule February – April 2010

On – mid round: Perth
Qc – Frontenac, Beauce
Qc – mid round: Nicolet

Mid March

On – Niagara, Haldimand, Norfolk,
Qc – Dorchester, Levis
BC – mid round

Late March

On – Prescott, Russell, Carleton
On – mid round: Renfrew, Lanark
Qc – Quebec, Montmorency, Bellechasse
Qc – mid round: Abitibi, Temiscamingue, Drummond, Bagot, St. Hyacinthe, Richelieu, Vercheres, Rouville, Deux Montagnes, Terrebonne

Early April

On – mid round: Leeds, Grenville, Huron
Qc – Montmagny
Qc – mid round: Labelle, Papineau, Gatineau, Argenteuil, Pontiac
ALBERTA – South/Central

Mid April

On – mid round: Grey, Bruce
Qc – L'Islet, Kamouraska
Qc – mid round: L'Assomption, Montcalm, Joliette, Berthier, Maskinonge, St. Maurice, Champlain, Laviolette, Portneuf
ALBERTA – Northern
MANITOBA

Late April

On – mid round: Halton, York, Peel, Simcoe, Dufferin, Ontario
Qc – mid round: Lac St. Jean, Roberval, Lapointe, Chicou

If you would like to start classifying your Brown Swiss, contact the Classification department of Holstein Canada at (519) 756-8300

Fees: \$11.00 + \$2.00 levy per animal
plus \$75.00 herd fee + gst
Mid Round is an additional \$100.00



2009 Excellents (January - December 2009)

Reg.	Name	Class	Score	Multiple	Owner	City	Province
BSCANF9481206	NOR BELLA DOMINATE PETALS	EX	94	2E	NORVAL MCCONNELL	KINCARDINE	ON
BSCANF100755048	ANFIELD STAR DIAMOND ET	EX	93	3E	MARKUS MUELLER	HUNTINGDON	QC
BSCANF9481206	NOR BELLA DOMINATE PETALS	EX	93	2E	NORVAL MCCONNELL	KINCARDINE	ON
BSCANF9481228	NOR BELLA JETWAY PORTRAIT	EX	93	1E	NORVAL MCCONNELL	KINCARDINE	ON
BSUSAF936722	JA-KA HILLARY HILLBILLY	EX	93	1E	BRADNER FARMS	ABBOTSFORD	BC
BSCANF10034075	GUBELMAN CONAN DANIELLE	EX	92	5E	ERNST GUBELMANN	WALTON	ON
BSCANF9359292	EVENTIDE DUKE DAISY	EX	92	3E	EDENCREST SWISS	ELMWOOD	ON
BSCANF8377674	GUBELMAN DORA'S REGINA	EX	92	2E	ERNST GUBELMANN	WALTON	ON
BSCANF102122703	SHADY LANE SWISS PT AVERY	EX	92	2E	BARRIE A & DIANE DRUMMOND	SHAWVILLE	QC
BSCANF100762190	BERTHE CARTOON CORR	EX	92	1E	FERME B.T.	ST-BRUNO	QC
BSCANF8444739	SWISS DREAM JETVIN SYLVIA	EX	92	1E	SWISS DREAM FARM	WAWANESA	MB
BSCANF7877391	HOMETOWN CARTOON BEAUTY	EX	92	1E	BROWN HEAVEN & LOUIS CHARRON	VERCHÈRES	QC
BSCANF102122703	SHADY LANE SWISS PT AVERY	EX	92	1E	BARRIE A & DIANE DRUMMOND	SHAWVILLE	QC
BSUSAF914100	RED BRAE LA ZEUS TATTI J	EX	92	1E	BRADNER FARMS	ABBOTSFORD	BC
BSCANF41079	NOR BELLA JASON DESIRE	EX	91	4E	NORVAL MCCONNELL	KINCARDINE	ON
BSCANF8377694	GUBELMAN DANIEL WANDA	EX	91	3E	ERNST GUBELMANN	WALTON	ON
BSCANF40876	SWISS LAND COLLECT BRISAGO ET	EX	91	3E	FERME VANNOD ET ASSOCIÉS ENRG	ST-LOUIS DE GONZAGUE	QC
BSCANF100742807	MOROCCO CARTOON MYTHIL	EX	91	3E	FERME CARBONNEAU	COATICOOK	QC
BSCANF10036073	BANZ JEMSTONE MICKI	EX	91	3E	FERME BLYVIAN INC.	ST-HENRI DE LÉVIS	QC
BSCANF9481214	NOR BELLA SENSATION ELEGNCE ET	EX	91	2E	NORVAL MCCONNELL	KINCARDINE	ON
BSCANF8743270	DUN ROVIN ACRES DENMARK CASSIE	EX	91	2E	C MARK MCCONNELL	KINCARDINE	ON
BSCANF8509289	SPRING ROSE JAMAR JEM	EX	91	2E	BIG SPRING FARMS LTD	KITCHENER	ON
BSCANF8821360	SPRING ROSE JETVIN SEASON	EX	91	2E	STEPHEN HENHOEFFER	AYR	ON
BSCANF41676	SWISS DREAM DENMARK UNITA	EX	91	2E	SWISS DREAM FARM	WAWANESA	MB
BSCANF8377674	GUBELMAN DORA'S REGINA	EX	91	2E	ERNST GUBELMANN	WALTON	ON
BSCANF8460650	PER SWISS JANET 2	EX	91	2E	HENRY S. MARTIN	WALLENSTEIN	ON
BSCANF102673209	DUHOVENT CARTOON MIKAELLE	EX	91	1E	FERME DUHOVENT ENR	ST-ADELME	QC
BSCANF8824018	CRKISIDE FAE	EX	91	1E	CRKISIDE FARMS	WOODMORE	MB
BSCANF102122708	SHADY LANE SWISS PHC KANDIKANE	EX	91	1E	BARRIE A & DIANE DRUMMOND	SHAWVILLE	QC
BSCANF7409996	GUBELMAN JOLT LANA	EX	91	1E	ERNST GUBELMANN	WALTON	ON
BSCANF8824005	CRKISIDE LESLEY	EX	91	1E	CRKISIDE FARMS	WOODMORE	MB
BSCANF103028952	FRAGANCES CARTOON IZA	EX	91	1E	FERME FRAGANCES ENR	ST-OCTAVE DE MÉTIS	QC
BSCANF9481220	NOR BELLA BANKER DANICA	EX	91	1E	NORVAL MCCONNELL	KINCARDINE	ON
BSCANF7393844	BROWNSTAR CARTOON MARISA	EX	91	1E	MARCO PFISTER	MITCHELL	ON
BSCANF7679939	SPRING ROSE CARTOON SKYLAR	EX	91	1E	STEPHEN HENHOEFFER	AYR	ON
BSCANF41319	EDENCREST KING MOLLY	EX	90	6E	EDENCREST SWISS	ELMWOOD	ON
BSCANF10034677	SPRING ROSE MONACO BAMBI	EX	90	5E	STEPHEN HENHOEFFER	AYR	ON
BSCANF39440	NOR BELLA PRELUDE LASS	EX	90	5E	NORVAL MCCONNELL	KINCARDINE	ON
BSCANF39556	GOULAISE CURT HEVEA	EX	90	5E	FERME GOULAISE INC.	ST-BERNARD	QC
BSCANF8377677	GUBELMANN REGGIANO GINA	EX	90	3E	ERNST GUBELMANN	WALTON	ON
BSCANF8571034	CLEARCREST DENMARK DANIELLE	EX	90	3E	HAROLD & MARSHA JELINSKI	NEW LOWELL	ON
BSCANF8806456	SWISS DREAM BANKER KATTLIN	EX	90	3E	SWISS DREAM FARM	WAWANESA	MB
BSCANF39051	MELEDE MAGNIFIC RHODA 110G	EX	90	2E	R B & B J CUPPLES	THORSBY	AB
BSCANF8422550	PRIME VIEW VALERIE ISABELL	EX	90	2E	SHAWN KOOPMANS	PICTON	ON
BSCANF10033889	BEAULIEU CAMELOT PATRICIA	EX	90	2E	FERME LEHMANN	HÉBERTVILLE	QC
BSCANF7379508	ROBIN NEST POLO KANSAS	EX	90	2E	OSCAR BOWMAN	WALLENSTEIN	ON
BSCANF8821364	SPRING ROSE EVEN BELLA	EX	90	2E	STEPHEN HENHOEFFER	AYR	ON
BSCANF100548232	FRAGANCES DAVID ZERELDA	EX	90	2E	FERME FRAGANCES ENR	ST-OCTAVE DE MÉTIS	QC
BSCANF8377710	GUBELMAN CHAMP KELSIE	EX	90	2E	BATESDALE FARMS	STAYNER	ON
BSCANF39732	GUBELMAN GORDON DEVA	EX	90	2E	ERNST GUBELMANN	WALTON	ON
BSCANF8806456	SWISS DREAM BANKER KATTLIN	EX	90	2E	SWISS DREAM FARM	WAWANESA	MB
BSCANF10035569	GAHILET SUZELLE PARAQ	EX	90	2E	JEANNOT & LISE DESHARNAIS	CHESTERVILLE	QC
BSCANF8444704	SWISS DREAM PRESIDENT SARAYA	EX	90	2E	SWISS DREAM FARM	WAWANESA	MB
BSCANF10033834	SHADY LANE SWISS RHD EUDORA	EX	90	2E	BARRIE A & DIANE DRUMMOND	SHAWVILLE	QC
BSCANF8444661	SWISS DREAM GINO BETHANY	EX	90	2E	SWISS DREAM FARM	WAWANESA	MB
BSCANF8824022	CRKISIDE LINEN	EX	90	2E	CRKISIDE FARMS	WOODMORE	MB
BSCANF101289955	GRONVIC HART CARTOON	EX	90	2E	FERME GRONVIC S.E.N.C.	ST-VICTOR	QC
BSCANF10034208	TOP SWISS JEM CALANDA	EX	90	1E	HANS SIGNER	MOOREFIELD	ON
BSCANF102615959	GOULAISE JOLT PICOLINOCHÉ	EX	90	1E	FERME GOULAISE INC.	ST-BERNARD	QC
BSCANF8444725	SWISS DREAM ACE UANNA	EX	90	1E	SWISS DREAM FARM	WAWANESA	MB
BSCANF9350748	NOR BELLA JETWAY RIBBON ET	EX	90	1E	NORVAL MCCONNELL	KINCARDINE	ON
BSCANF8444759	SWISS DREAM ACE SYBELLE	EX	90	1E	SWISS DREAM FARM	WAWANESA	MB
BSCANF7409972	GUBELMAN PRESIDENT DAZZLE	EX	90	1E	ERNST GUBELMANN	WALTON	ON
BSCANF9481222	NOR BELLA JETWAY PARADISE ET	EX	90	1E	NORVAL MCCONNELL	KINCARDINE	ON
BSCANF7409988	GUBELMAN COLLECTION SHANNON	EX	90	1E	ERNST GUBELMANN	WALTON	ON
BSCANF10033897	FOUR OAK DENMARK TRUDY ET	EX	90	1E	FOUR OAK FARMS	KLEEFELD	MB
BSCANF9481237	NOR BELLA BLAZER MEADOW	EX	90	1E	NORVAL MCCONNELL	KINCARDINE	ON
BSCANF8879733	DRUMHAGGART UELI BAHDE BABY	EX	90	1E	DRUMHAGGART LTD	BEAUSEJOUR	MB
BSCANF9481208	NOR BELLA JETWAY SAM	EX	90	1E	NORVAL MCCONNELL	KINCARDINE	ON
BSCANF8828512	PRIME VIEW VALERIE NICOLE	EX	90	1E	KYLE & RYAN KUIPERS	BLOOMFIELD	ON
BSCANF8806614	SWISSLANE ACE LOTTO	EX	90	1E	SWISSLANE FARM	LISTOWEL	ON
BSCANF101891974	REYLA CARTOON CARRIE	EX	90	1E	AUBREY MACDOUGALL & LAURA JOHNSTON	ORMSTOWN	QC
BSCANF102122722	SHADY LANE SWISS DOM ALLERO ET	EX	90	1E	BARRIE A & DIANE DRUMMOND	SHAWVILLE	QC
BSCANF8626375	ELOC CARTOON KARA	EX	90	1E	A. DEAN COLE	MIDDLE MUSQUODOBOIT	NS
BSCANF102185280	GRONVIC SILA CARTOON	EX	90	1E	FERME GRONVIC S.E.N.C.	ST-VICTOR	QC
BSCANF103028965	FRAGANCES CARTOON EVA	EX	90	1E	FERME FRAGANCES ENR	ST-OCTAVE DE MÉTIS	QC
BSCANF7641465	EASTWIND TURMOIL BELLA	EX	90	1E	HEIDI & WALTER VON AH	ST. ALBERT	ON
BSCANF7488272	PRINSVILLE CARTOON SAPPHIRE	EX	90	1E	PRINSVILLE DAIRY FARMS INC.	BLOOMFIELD	ON
BSCANF8806499	SWISS DREAM CARTOON UREKA	EX	90	1E	SWISS DREAM FARM	WAWANESA	MB
BSCANF7409991	GUBELMAN EVEN BETTER WHITNEY	EX	90	1E	ERNST GUBELMANN	WALTON	ON
BSCANF103291294	DUPONT GIROFLÉE	EX	90	1E	FERME BLYVIAN INC.	ST-HENRI DE LÉVIS	QC
BSCANF9481217	NOR BELLA COLLECTION LICORICE	EX	90	1E	NORVAL MCCONNELL	KINCARDINE	ON
BSCANF7410000	GUBELMAN DANIEL CANDICE ET	EX	90	1E	ERNST GUBELMANN	WALTON	ON
BSCANF7409984	GUBELMAN DENMARK WONDER ET	EX	90	1E	ERNST GUBELMANN	WALTON	ON
BSCANF101230783	CASTEL MASCOT CLAIRE	EX	90	1E	FERME HIRONDELLE ENR.	STE-HÉLÈNE DE KAMOURASKA	QC
BSCANF10035290	PRIME VIEW KRISTEN HEIDI	EX	90	1E	JASON COURNEYEA	WELLINGTON	ON

Congratulations to the breeders and owners of these great animals!

2009 Very Good Two Year Olds (January - December 2009)

Reg.	Name	Class	Score	Owner	City	Province
BSUSAF952882	ROUND HILL PREMIUM WINK ET	VG2	87	BRADNER FARMS	ABBOTSFORD	BC
BSUSAF956154	SEQUA LEGACY LILA	VG2	87	BRADNER FARMS	ABBOTSFORD	BC
BSUSAF951155	SUN-MADE GB AGNDA PERSIA ET	VG2	87	BRADNER FARMS	ABBOTSFORD	BC
BSCANF8987984	NOR BELLA EMORY PODIUM	VG2	87	NORVAL MCCONNELL	KINCARDINE	ON
BSCANF102925488	SABONO CARTOON KERLA	VG2	87	FERME CARBONNEAU	COATICOOK	QC
BSCANF7729890	HOFSTRA WURL DEZAREY	VG2	86	TAMMY HOFSTRA	MILLET	AB
BSCANF7855573	GUBELMAN DRAFT DEANA	VG2	86	ERNST GUBELMANN	WALTON	ON
BSCANF7855600	GUBELMAN SCIPIO LINDA	VG2	86	ERNST GUBELMANN	WALTON	ON
BSCANF8987994	NOR BELLA TURMOIL DIMPLES	VG2	86	NORVAL MCCONNELL	KINCARDINE	ON
BSCANF7749530	FOUR OAK SUPREME MELLIE	VG2	86	FOUR OAK FARMS	KLEEFELD	MB
BSCANF103944901	ANFIELD FASTBREAK UNITED	VG2	86	MARKUS MUELLER	HUNTINGDON	QC
BSCANF7912879	DUN ROVIN BRILLIANT BUTTER	VG2	86	DUN ROVIN ACRES LTD	KINCARDINE	ON
BSCANF7701795	SWISS DREAM FASTBREAK SERANA	VG2	86	SWISS DREAM FARM	WAWANESA	MB
BSCANF7701802	SWISS DREAM LEGACY PETUNIA	VG2	85	SWISS DREAM FARM	WAWANESA	MB
BSCANF7855557	GUBELMAN DORINO CHERYLL	VG2	85	ERNST GUBELMANN	WALTON	ON
BSCANF104277879	ISIDORE BEAMER ORLANDA	VG2	85	FERME LEHMANN	HÉBERTVILLE	QC
BSCANF104277880	ISIDORE BRINKS KALINDA	VG2	85	FERME LEHMANN	HÉBERTVILLE	QC
BSCANF7827975	SWISSLANE WURL KARIN	VG2	85	SWISSLANE FARM	LISTOWEL	ON
BSCANF8901587	SWISSLANE ZEUS REGULA	VG2	85	SWISSLANE FARM	LISTOWEL	ON
BSCANF103699074	BERTHE CARTOON TAYLORE	VG2	85	FERME B.T.	ST-BRUNO	QC
BSCANF7701813	SWISS DREAM FASTBREAK OSTARA	VG2	85	SWISS DREAM FARM	WAWANESA	MB
BSCANF103812260	FRAGANCES VINNER SYLVIANNE	VG2	85	FERME FRAGANCES ENR ET FRANCE OUELLET	HAM NORD	QC
BSCANF7701815	SWISS DREAM JETWAY ANGELA	VG2	85	SWISS DREAM FARM	WAWANESA	MB
BSCANF7701817	SWISS DREAM DYNASTY ULRICA	VG2	85	SWISS DREAM FARM	WAWANESA	MB
BSCANF104136851	DAYRY SWISS DIABLO UREKA	VG2	85	BROWN HEAVEN	VERCHÈRES	QC
BSCANF102925488	SABONO CARTOON KERLA	VG2	85	FERME CARBONNEAU	COATICOOK	QC
BSCANF7701837	SWISS DREAM JORDON SUGAR	VG2	85	SWISS DREAM FARM	WAWANESA	MB
BSCANF7749530	FOUR OAK SUPREME MELLIE	VG2	85	FOUR OAK FARMS	KLEEFELD	MB
BSCANF8987991	NOR BELLA CHAMPION DELTA	VG2	85	NORVAL MCCONNELL	KINCARDINE	ON
BSCANF103301653	SISTA CANDINE	VG2	85	FERME CASSISTA BIC INC.	BIC	QC
BSCANF104346302	GOULAISE WURL TRIOLI	VG2	85	FERME GOULAISE INC.	ST-BERNARD	QC
BSCANF8987934	CRISIDE TIFFANY	VG2	85	BRADNER FARMS	ABBOTSFORD	BC
BSCANF103970661	MAPLELEDGE DANIEL JULS	VG2	85	FERME MAPLELEDGE FARM SNC	SAWYERVILLE	QC
BSCANF7679988	SPRING ROSE LEADER BRYN	VG2	85	STEPHEN HENHOEFFER	AYR	ON
BSCANF8925987	MAYCCO JSF SUGAR	VG2	85	JAMES S FARRELL	RIPLEY	ON
BSCANF7894176	DRUMHAGGART COLBY SHELBY	VG2	85	DRUMHAGGART LTD	BEAUSEJOUR	MB
BSCANF104575271	LENTRE ROCHE WOLGA PARKO	VG2	85	FERME VANNOD ET ASSOCIÉS ENRG	ST-LOUIS DE GONZAGUE	QC
BSCANF7855579	GUBELMAN BRILIANCE LUCKY	VG2	85	ERNST GUBELMANN	WALTON	ON
BSCANF9549482	SPRING ROSE SUPREME BABE	VG2	85	STEPHEN HENHOEFFER	AYR	ON
BSCANF8902580	EDENCREST CARTOON LIBET ET	VG2	85	EDENCREST SWISS	ELMWOOD	ON
BSCANF9597050	SWISS DREAM PRUNKI GINA	VG2	85	SWISS DREAM FARM	WAWANESA	MB
BSCANF7855589	GUBELMAN WAGOR YORA	VG2	85	ERNST GUBELMANN	WALTON	ON
BSCANF7855591	GUBELMAN AGENDA VISTA	VG2	85	FERME SEROL SENC	ROXTON FALLS	QC
BSCANF8968550	EASTWIND DYNASTY BETHLI	VG2	85	HEIDI & WALTER VON AH	ST. ALBERT	ON
BSCANF103321818	LA SEIGNEURIE DANIEL BERNE	VG2	85	FERME SEIGNEURIALE GAGNÉ INC.	CAP ST-IGNACE	QC
BSCANF7962476	BATESDALE DANIEL ROXY	VG2	85	BATESDALE FARMS	STAYNER	ON
BSCANF7886985	TOP SWISS SCIPIO JANE	VG2	85	HANS SIGNER	MOOREFIELD	ON
BSCANF10036855	MATT W REGULA 6T	VG2	85	WERNER MATT	WILLIAMSTOWN	ON
BSCANF7292955	OAK HILL UDO ROSITA	VG2	85	ARTHUR VANDENBOSCH	SWAN LAKE	MB
BSCANF7855553	GUBELMAN WURL LESLIE	VG2	85	HAROLD & MARSHA JELINSKI	NEW LOWELL	ON
BSCANF103853311	GAHILET GRACE ALLIANCE	VG2	85	GAÉLAN HINSE ET JEANNOT & LISE DESHARNAIS	TINGWICK	QC
BSCANF8987990	NOR BELLA BLAZER PIRANHA	VG2	85	NORVAL MCCONNELL	KINCARDINE	ON
BSCANF7855581	GUBELMAN WAGOR VERONA	VG2	85	ERNST GUBELMANN	WALTON	ON
BSCANF7855588	GUBELMAN AGENDA DORISSA	VG2	85	BATESDALE FARMS	STAYNER	ON
BSCANF104731723	SWISS LAND ZEUS BRIDGE	VG2	85	JEANNOT & LISE DESHARNAIS	CHESTERVILLE	QC
BSCANF104587759	SHADY LANE SWISS SUP ALLRIGHT	VG2	85	BARRIE A & DIANE DRUMMOND	SHAWVILLE	QC
BSCANF8541241	APPLEGROVE DENMARK VALENTINE	VG2	85	SWISS DREAM FARM	WAWANESA	MB
BSUSAF950816	SUNNY ACRES PAY WINDY TWIN	VG2	85	BRADNER FARMS	ABBOTSFORD	BC
BSCANF7855587	GUBELMAN BEAMER DICE	VG2	85	ERNST GUBELMANN	WALTON	ON
BSCANF103935805	ST-MÉDARD DANIEL FIDELE	VG2	85	FERME SAINT MÉDARD INC.	ST-CHRISTOPHE ARTHABASKA	QC
BSCANF7701846	SWISS DREAM MISSION RAMONA	VG2	85	SWISS DREAM FARM	WAWANESA	MB
BSCANF103944927	SWISS FANTASY LEGENDARY FLO	VG2	85	MARKUS MUELLER & ROGER VANNOD	HUNTINGDON	QC
BSCANF104348185	FRAGANCES GOLDFINGER ZOE	VG2	85	FERME FRAGANCES ENR	ST-OCTAVE DE MÉTIS	QC
BSCANF7679976	SPRING ROSE KLASSIC JUDE	VG2	85	STEPHEN HENHOEFFER	AYR	ON
BSCANF104265161	MILEC DANIEL ARDÈNE	VG2	85	FERME MCF LECLERC INC.	TROIS RIVIÈRES	QC

Congratulations to the breeders and owners of these great animals!

Production Records (January - December 2009) Ranked by Composite Milk, Fat & Protein

Y earlings		DIM	Milk	Fat	%F	Prot	%P	Milk	Fat	Prot	C-BCA				
1	BSCANF7855565	GP	81	305	9531	413	4.3	322	3.4	316	339	304	959 ERNST GUBELMANN	WALTON	ON
2	BSCANF7913854	G	78	337	10093	374	3.7	356	3.5	327	294	330	951 ROSELANE FARM	ROLLYVIEW	AB
3	BSCANF7641523	G	74	339	9700	382	3.9	343	3.5	311	301	315	927 HEIDI & WALTER VON AH	ST. ALBERT	ON
4	BSCANF7641520	GP	82	312	8627	419	4.9	344	4	273	325	313	911 HEIDI & WALTER VON AH	ST. ALBERT	ON
5	BSCANF7641519	VG	85	310	9499	373	3.9	332	3.5	306	296	305	907 HEIDI & WALTER VON AH	ST. ALBERT	ON
6	BSCANF8901596	G	77	337	9860	410	4.2	318	3.2	303	311	279	893 SWISSLANE FARM	LISTOWEL	ON
7	BSCANF7641560	GP	83	322	9617	369	3.8	335	3.5	292	273	291	856 HEIDI & WALTER VON AH	ST. ALBERT	ON
8	BSCANF7855573	VG	86	309	9274	382	4.1	321	3.5	286	287	282	855 ERNST GUBELMANN	WALTON	ON
9	BSCANF7855563	GP	81	302	7667	322	4.2	298	3.9	257	264	287	808 ERNST GUBELMANN	WALTON	ON
10	BSCANF7855568	VG	85	357	8369	336	4	316	3.8	263	258	285	806 ERNST GUBELMANN	WALTON	ON
Jr. 2 Yr-Old															
1	BSCANF102714368	GP	81	738	12180	460	3.8	417	3.4	379	357	372	1108 FERME MON PARADIS L'ISLE-VERTE INC.	L'ISLE VERTE OUEST	QC
2	BSCANF7827973	GP	81	353	11317	502	4.4	371	3.3	318	351	299	968 SWISSLANE FARM	LISTOWEL	ON
3	BSCANF7827976	GP	82	346	9991	466	4.7	344	3.4	305	350	302	957 SWISSLANE FARM	LISTOWEL	ON
4	BSCANF7660001	VG	88	316	10614	452	4.3	313	3	328	342	277	947 NORVAL MCCONNELL	KINCARDINE	ON
5	BSCANF7502623	GP	83	296	10768	421	3.9	358	3.4	321	309	311	941 RIMANN'S MAPLE BOOM FARM	WILLIAMSTOWN	ON
6	BSCANF8901586	GP	82	319	9784	391	4	337	3.4	309	308	304	926 SWISSLANE FARM	LISTOWEL	ON
7	BSCANF7827969	GP	81	474	10939	381	3.5	366	3.4	326	278	313	917 KATHARINA ANDRIST	LISTOWEL	ON
8	BSCANF7741007	G	74	380	9673	441	4.6	320	3.3	300	334	283	917 SWISSLANE FARM	BOWDEN	AB
9	BSCANF7827962	VG	86	312	10982	428	3.9	369	3.4	313	301	300	914 KATHARINA ANDRIST	LISTOWEL	ON
10	BSCANF7916283	F	69	343	12807	549	4.3	401	3.1	365	387	326	1078 KATHARINA ANDRIST	BOWDEN	AB
Sr. 2 Yr-Old															
1	BSCANF7740993	GP	81	387	11562	441	3.8	383	3.3	302	285	286	873 MARC-ANTOINE ROUSSEAU	POHENEGAMOOK	QC
2	BSCANF103722885	GP	82	318	10667	399	3.7	351	3.3	302	281	283	866 SWISSLANE FARM	LISTOWEL	ON
3	BSCANF7827972	VG	85	504	9408	457	4.9	374	4	259	311	294	864 ERNST GUBELMANN	WALTON	ON
4	BSCANF7410049	EX	90	329	9864	421	4.3	364	3.7	276	292	291	859 ERNST GUBELMANN	WALTON	ON
5	BSCANF7410051	VG	85	295	10168	446	4.4	380	3.7	268	290	286	844 HEIDI & WALTER VON AH	ST. ALBERT	ON
6	BSCANF7641494	GP	81	412	9735	398	4.1	350	3.6	278	280	285	843 BIG SPRING FARMS LTD	KITCHENER	ON
7	BSCANF7679991	VG	85	297	9870	416	4.2	341	3.5	273	283	271	827 LA FERME HANS ENR.	ACTON VALE	QC
8	BSCANF103135198	GP	83	316	9498	433	4.6	349	3.7	260	293	273	826 ERNST GUBELMANN	WALTON	ON
9	BSCANF7410072	G	79	403	9654	386	4	340	3.5	266	261	268	795 KEVIN ELLIOTT	KENILWORTH	ON
10	BSCANF7454532	GP	81	383	12308	603	4.9	464	3.8	322	389	346	1057 HEIDI & WALTER VON AH	ST. ALBERT	ON
Jr. 3 Yr-Old															
1	BSCANF7641449	VG	85	336	12345	446	3.6	411	3.3	342	308	326	976 SWISSLANE FARM	LISTOWEL	ON
2	BSCANF7653598	GP	83	314	12989	509	3.9	421	3.2	331	324	307	962 SWISSLANE FARM	LISTOWEL	ON
3	BSCANF7653613	GP	87	387	11168	471	4.2	401	3.6	302	314	308	924 RIMANN'S MAPLE BOOM FARM	WILLIAMSTOWN	ON
4	BSCANF7686022	GP	82	373	12127	460	3.8	442	3.6	308	291	320	919 MORSAN FARMS LTD	PONOKA	AB
5	BSCANF7554121	VG	88	343	10985	441	4	405	3.7	301	298	316	915 ERNST GUBELMANN	WALTON	ON
6	BSCANF7410042	G	79	307	12074	497	4.1	389	3.2	310	315	286	911 SWISSLANE FARM	LISTOWEL	ON
7	BSCANF7653600	G	75	306	10245	447	4.4	376	3.7	279	300	291	870 HEIDI & WALTER VON AH	LISTOWEL	ON
8	BSCANF7641445	G	77	325	12059	480	4	379	3.1	300	298	269	867 KATHARINA ANDRIST	ST. ALBERT	ON
9	BSCANF7740982	GP	84	836	11517	446	3.9	394	3.4	292	281	286	859 SWISS DREAM FARM	BOWDEN	AB
10	BSCANF8806484	VG	88	557	12522	590	4.7	457	3.6	306	362	320	988 MARKUS MUELLER	WAWANESA	MB
Sr. 3 Yr-Old															
1	BSCANF101614839	VG	88	307	11671	517	4.4	429	3.7	292	319	306	917 ERNST GUBELMANN	HUNTINGDON	QC
2	BSCANF7410012	VG	87	316	10495	459	4.4	409	3.9	275	300	308	883 ERNST GUBELMANN	WALTON	ON
3	BSCANF7410017	VG	85	366	10768	475	4.4	380	3.5	280	306	281	867 JOHN & LINDA TAMIS	WALTON	ON
4	BSCANF7541783	VG	85	363	12351	414	3.4	425	3.4	300	252	295	847 ROSELANE FARM	SURREY	BC
5	BSCANF8828531	GP	84	379	11750	431	3.7	395	3.4	291	268	280	839 SWISS DREAM FARM	ROLLYVIEW	AB
6	BSCANF8806521	VG	84	379	11750	431	3.7	395	3.4	291	268	280	839 SWISS DREAM FARM	WAWANESA	MB

7	BSCANF102621070	ANFIELD JP FABULOUS ET	VG	86	336	10580	457	4.3	368	3.5	272	291	271	834	MARKUS MUELLER	HUNTINGDON	QC
8	BSCANF101816623	LES ESSARTS SOLEA	GP	82	414	11529	411	3.6	370	3.2	295	262	270	827	FERME MAPLELEDGE FARM SNC	SAWYERVILLE	QC
9	BSCANF7409991	GUBELMAN EVEN BETTER WHITNEY	EX	90	425	10781	461	4.3	402	3.7	264	281	281	826	ERNST GUBELMANN	WALTON	ON
10	BSCANF8892478	TOP SWISS VINBREI VINA	GP	81	398	10669	439	4.1	369	3.5	273	278	269	820	SIMON SIGNER	MOOREFIELD	ON
4 Yr Old																	
1	BSCANF8729616	EASTWIND VICTORY COOKIE	GP	81	390	14277	699	4.9	537	3.8	337	409	363	1109	HEIDI & WALTER VON AH	ST. ALBERT	ON
2	BSCANF7409990	GUBELMAN CARTOON VIOLET ET	VG	85	520	13508	554	4.1	493	3.6	336	344	350	1030	ERNST GUBELMANN	WALTON	ON
3	BSCANF9486626	SPRUCE AVENUE BIG TIME BABE	EX	92	315	14175	640	4.5	442	3.1	329	374	293	996	SPRUCE AVENUE FARMS INC	PARIS	ON
4	BSCANF8806514	SWISS DREAM COLBY GRACE ET	GP	81	361	13626	555	4.1	492	3.6	311	319	322	952	SWISS DREAM FARM	WAWANESA	MB
5	BSCANF9399430	KAMA SAMI TAMARA	G	75	338	13878	552	4	435	3.1	329	327	294	950	KATHARINA ANDRIST	BOWDEN	AB
6	BSCANF9481220	NOR BELLA BANKER DANICA	EX	91	316	13795	521	3.8	456	3.3	327	306	308	941	NORVAL MCCONNELL	KINCARDINE	ON
7	BSCANF8828505	PRIME VIEW MARGO ALEXIS ET	GP	82	603	14423	509	3.5	462	3.2	332	293	304	929	ROSELANE FARM	ROLLYVIEW	AB
8	BSCANF8729610	EASTWIND CARTOON MANDY	VG	85	306	12184	498	4.1	426	3.5	307	313	306	926	HEIDI & WALTER VON AH	ST. ALBERT	ON
9	BSCANF7409988	GUBELMAN COLLECTION SHANNON	EX	91	321	12124	477	3.9	442	3.6	301	294	313	908	ERNST GUBELMANN	WALTON	ON
10	BSCANF8455947	TOP SWISS ACE ARNIKA	VG	85	934	11477	510	4.4	417	3.6	289	319	300	908	HANS SIGNER	MOOREFIELD	ON
5 Yr Old																	
1	BSCANF9359292	EVENTIDE DUKE DAISY	EX	92	536	12871	656	5.1	450	3.5	299	379	298	976	EDENCREST SWISS	ELMWOOD	ON
2	BSCANF8462747	POPLAR OAK CALEY	GP	82	350	15878	475	3	448	2.8	374	281	301	956	MORSAN FARMS LTD	PONOKA	AB
3	BSCANF8729506	EASTWIND STARBUCK STERN	VG	85	324	12808	545	4.3	454	3.5	293	313	297	903	HEIDI & WALTER VON AH	ST. ALBERT	ON
4	BSCANF7328388	FYNHAVEN POLSTER GABRIELLE	GP	80	323	13956	505	3.6	419	3	325	295	279	899	PHINNEYVAL FARMS	BRIDGETOWN	NS
5	BSCANF8377685	GUBELMAN DOMINATE DESTINY	VG	86	371	13305	567	4.3	444	3.3	297	319	283	899	ERNST GUBELMANN	WALTON	ON
6	BSCANF9481207	NOR BELLA PLAYBOY JOLLY	EX	90	383	11808	519	4.4	400	3.4	285	313	276	874	NORVAL MCCONNELL	KINCARDINE	ON
7	BSCANF8509233	SPRING ROSE JEMSTONE BRIDEL ET	VG	85	576	12288	509	4.1	428	3.5	275	284	274	833	STEPHEN HENHOEFFER	AYR	ON
8	BSCANF8649780	CRIKSIDE PRONTO SATIN	GP	83	399	12780	456	3.6	410	3.2	295	264	270	829	MORSAN FARMS LTD	PONOKA	AB
9	BSCANF8806456	SWISS DREAM BANKER KATTLIN	EX	90	349	11069	465	4.2	417	3.8	265	278	286	829	SWISS DREAM FARM	WAWANESA	MB
10	BSCANF8377712	GUBELMAN PRESIDENT DELILA	VG	87	342	12257	448	3.7	441	3.6	278	255	285	818	ERNST GUBELMANN	WALTON	ON
Mature Cow																	
1	BSCANF9399395	KAMA EAGLE INGA	GP	83	307	15003	650	4.3	492	3.3	330	361	309	1000	KATHARINA ANDRIST	BOWDEN	AB
2	BSCANF8743263	DUN ROVIN ACRES ACE GLORY	VG	87	436	11321	724	6.4	390	3.4	259	416	255	930	DUN ROVIN ACRES LTD	KINCARDINE	ON
3	BSCANF10035463	GAHILET GRANAM DEREK	GP	83	449	13945	496	3.6	419	3	323	290	277	890	JEANNOT & LISE DESHARNAIS	CHESTERVILLE	QC
4	BSCANF9267817	SPRUCE AVENUE S BEAUTY ET	VG	85	732	12845	541	4.2	432	3.4	291	309	281	881	SPRUCE AVENUE FARMS INC	PARIS	ON
5	BSCANF39882	TOP SWISS BRANDON BRUNA	VG	86	1060	13317	513	3.9	442	3.3	299	291	283	873	HANS SIGNER	MOOREFIELD	ON
6	BSCANF10035965	ROSEBANK FRANZ T-CUP	VG	87	437	11442	510	4.5	439	3.8	267	300	293	860	HEIDI & WALTER VON AH	ST. ALBERT	ON
7	BSCANF8377665	GUBELMAN CARTOON UTAH ET	VG	85	338	11722	500	4.3	402	3.4	275	294	270	839	ERNST GUBELMANN	WALTON	ON
8	BSCANF8509256	SPRING ROSE PR FLOSSY	VG	88	433	12379	456	3.7	412	3.3	289	268	275	832	BIG SPRING FARMS LTD	KITCHENER	ON
9	BSCANF41147	SPRING ROSE DENMARK SNOWY	VG	85	352	12204	479	3.9	422	3.5	277	274	274	825	STEPHEN HENHOEFFER	AYR	ON
10	BSCANF9272035	PLEASANT VIEW SILVIA	G	78	358	12728	426	3.4	438	3.4	292	245	286	823	ARON TEN BRUMMELHUIS	OLDS	AB
Aged Cow																	
1	BSCANF36112	NOR L JOLYN	EX	90	748	12441	483	3.9	382	3.1	298	296	262	856	STEPHEN HENHOEFFER	AYR	ON
2	BSCANF37085	GOULAISE JACQUE B EMEUTE	VG	86	386	11853	453	3.8	384	3.2	282	280	261	823	FERME GOULAISE INC.	ST-BERNARD	QC
3	BSCANF38147	SHADY LANE SWISS BLOSSOM	EX	90	300	9496	423	4.5	347	3.6	231	264	241	736	BARRIE A & DIANE DRUMMOND	SHAWVILLE	QC
4	BSCANF39051	MELEDE MAGNIFIC RHODA 110G	EX	90	332	9674	372	3.9	337	3.5	220	215	219	654	R B & B J CUPPLES	THORSBY	AB
5	BSCANF40503	LONG VIEW JADES RAISIN	EX	94	3560	8302	404	4.9	317	3.8	194	242	213	649	MARKUS MUELLER	HUNTINGDON	QC
6	BSCANF10035202	DUN ROVIN ACRES PROPHET FIONA	GP	80	455	8983	355	4	295	3.3	219	223	205	647	DUN ROVIN ACRES LTD	KINCARDINE	ON
7	BSCANF37363	PRIME VIEW WENDY LORNA	EX	90	416	9524	357	3.8	316	3.3	217	211	205	633	PHILIP & DAVID PRINZEN	BLOOMFIELD	ON
8	BSCANF36553	GOULAISE EMODEE DIDON ET	VG	87	325	8545	360	4.2	289	3.4	201	221	194	616	FERME GOULAISE INC.	ST-BERNARD	QC
9	BSCANF39077	NOR BELLA T J SALTINA	EX	90	385	9470	320	3.4	298	3.1	221	192	199	612	NORVAL MCCONNELL	KINCARDINE	ON
10	BSCANF36573	SWISS DREAM JETWA Y URSULA	EX	90	581	8270	313	3.8	272	3.3	202	198	190	590	SWISS DREAM FARM	WAWANESA	MB

JANUARY 2010 BROWN SWISS EVALUATIONS



ÉVALUATIONS SUISSE BRUNE - JANVIER 2010

Taureaux Brown Swiss Bulls

Newly Proven Bulls by LPI		Top 5 LPI Bulls		Bulls with Big LPI Change		Sires of Top 25 LPI Bulls (Average LPI)			
Nouvellement Éprouvés selon IPV		5 Meilleurs selon l'IPV		Taureaux avec changement d'IPV important		Pères des 25 Meilleurs (Moyenne d'IPV)			
9 GOLDMINE	DYNASTY	891	+	2042	POLO	-472	595	PROPHET	20% 1062
18 BEAMER	EMICO	713	-	1668	WURL	+380	932	PATRICK	8% 961
27 PERFECTA	ENSIGN	545	-	1142	ZEUS	-248	451	PRELUDE	8% 885
					ALTARANSOM	+205	2042	SIMON	8% 839
					PAYOFF	-	1041	ENSIGN	8% 814
Milk / Lait (kg)		Fat / Gras (kg)		Protein / Protéine (kg)		Conformation			
1 ALTARANSOM		1 DALLAS	-	42	1 PAYOFF	-	36	1 STARBUCK	0 13
2 JAMARR		2 SPECIAL	-	40	2 GORDON	-	35	2 JADE	- 11
3 DOMINATE		2 PRIDE	-	40	3 ALTARANSOM	+	32	3 CARTOON	0 10
4 PROPHET		4 GORDON	-	39	4 EAGLE	-	27	4 WURL	+ 9
5 DALLAS		5 DOMINATE	-	36	5 EXECUTIVE	-	26	5 GOLDMINE	N 8
								5 ACE	+ 8
								5 LEGACY	N 8
								5 VISION	0 8

Vaches Brown Swiss Cows

Top 5 LPI Cows		Sires of Top 400 LPI Cows		Dams of Top 400 LPI Cows		New Top LPI Cows			
5 Meilleures Vaches selon l'IPV		Pères des 400 Meilleures selon l'IPV		Mères des 400 Meilleures selon l'IPV		Meilleures Nouvelles Vaches selon l'IPV			
1 GUBELMAN CARTOON MAXINE	+ 2292	CARTOON	18.50%	1241	GUBELMAN GORDON DORA	8	12 GUBELMAN DRAFT GLORIA	1775	
2 SYLGO RANSOM JULIANE	+ 2026	DENMARK	5.75%	1267	MAPLEYARD EVEN VIXIE	6	56 GUBELMAN DRAFT SHANIA	1502	
3 KRUSES PRELUDE FLORIDA ET	- 1989	WURL	3.00%	1119	SWISS DREAM JETWAY UNA	6	69 TOP SWISS SPECIAL SUVA	1438	
4 GUBELMAN CAMELOT KATIE ET	- 1979	SPECIAL	2.75%	1306	GUBELMAN ENVY MINDY	6	82 OBERMATT MENTHOS WAGOR	1404	
5 GUBELMAN CARTOON VIOLET ET	+ 1973	PRELUDE	2.75%	1202			90 ANFIELD TOKYO EDELWEISS	1371	
Milk / Lait (kg)		Fat / Gras (kg)		Protein / Protéine (kg)		Conformation			
1 POPLAR OAK CALEY	+ 2583	1 GUBELMAN DRAFT DEANA	-	69	1 SWISS DREAM GORDON ULICIA ET	+	68	1 EDENCREST CARTOON LEE ET	- 15
2 GUBELMAN CONAN IONA	+ 1922	1 SWISSLANE JOLT KATHI	0	69	2 SWISS DREAM GORDON URIGA ET	-	60	1 POPLAR OAK CRYSTAL	- 15
3 GUBELMAN COLLECTION SNOWWHITE	- 1839	1 MAPLE BOOM DERORA	N	69	3 POPLAR OAK CALEY	-	57	3 SABONO CARTOON KERLA	0 14
4 VO GRIN PRELUDE CECILA	+ 1761	4 GUBELMAN DUKE LEXY	+	68	4 SWISSLANE CARTOON MAY	-	55	3 SWISS DREAM DENMARK UNITA	- 14
5 SWISS DREAM GORDON ULICIA ET	+ 1729	4 TOP SWISS EMORY BROWNIE	-	68	4 GUBELMAN DRAFT SHANIA	+	55	3 POPLAR OAK COURTNEY ET	0 14
								3 EDENCREST IMAGE LEILA	- 14
								3 ISIDORE STARBUCK JESTA	0 14

CANADIAN DAIRY NETWORK (CDN) RESEAU LAITIER CANADIEN
 TOP LPI BULL REPORT / RAPPORT DES MEILLEURS TAUREAUX SELON L'IPV

JANUARY 2010

1

BREED/RACE: BROWN SWISS

RANK	LPI	RK	TC	A.I.	CODE	NUMBER	NAME	HERDS	DAUS	TDR	REL	MILK	RK	FAT	RC	PROT	RK	FAT%	PROT%	PERS	SCS	CONF	RK	HL	DF			
RANG	IPV	RC	CT	CODE	NUMERO	NOM	TROUP	FILLES	FILLES	RJT	FIAB	LAIT	RC	GRAS	RC	PROT	RC	%GRAS	%PROT	PERS	CCS	CONF	RC	DV	FF			
1	2042	99	I	011BS00603	39421	BLESSING PROPHET RANSOM	18	28	422	79	1319	99	27	82	32	99	-0.29	-0.19	100	2.86	5	82	MS/SM	4	119	103	MSP/VT	102
						Lactation 1			203	78	1267	29	28	-0.26	-0.21	101	2.69						FL/PM	12		MT/TT		
						Lactation 2			111	77	1441	30	38	-0.32	-0.18	98	2.88						DS/PL	4		CA/AV	103	
						Lactation 3			108	74	1212	23	29	-0.28	-0.17	98	3.01						UD/PP	2S		DCA/AFV	107	
2	1668	99	D	054BS00311	191928	QUINCY EVEN SPECIAL ET	27	51	662	85	262	71	40	99	21	92	0.36	-0.12	103	2.65	6	90	MS/SM	6	106	100	MSP/VT	107
						Lactation 1			359	86	-22	27	8	0.34	0.10	103	2.80						FL/PM	8		MT/TT	104	
						Lactation 2			203	84	284	37	24	0.32	0.15	99	2.57						DS/PL	1		CA/AV	103	
						Lactation 3			100	80	472	54	29	0.43	0.11	107	2.57						UD/PP	2S		DCA/AFV	103	
3	1142	96	D	073BS00018	38796	R HART CARTOON ET	199	650	9509	98	374	78	23	78	13	74	0.10	-0.01	102	3.19	10	98	MS/SM	9	104	101	MSP/VT	104
						Lactation 1			4624	98	73	15	4	0.14	0.01	103	3.21						FL/PM	7		MT/TT	98	
						Lactation 2			3060	98	552	33	19	0.14	-0.02	100	3.16						DS/PL	8		CA/AV	105	
						Lactation 3			1825	98	499	21	16	0.02	-0.03	100	3.19						UD/PP	1D		DCA/AFV	105	
4	1043	96	D	011BS00594	40724	SUN-MADE GAR BRO FRONTO ET	28	35	507	82	667	92	32	92	24	96	0.05	-0.01	107	2.96	2	62	MS/SM	2	103	101	MSP/VT	104
						Lactation 1			239	82	570	28	21	0.05	-0.01	106	3.05						FL/PM	-2		MT/TT	97	
						Lactation 2			157	81	894	41	32	0.07	-0.02	106	2.69						DS/PL	2		CA/AV	95	
						Lactation 3			111	78	505	23	20	0.04	0.01	109	3.15						UD/PP	2S		DCA/AFV	105	
5	1041	96	I	014BS00288	193627	TRIANGLE ACRES PO PAYOFF ET	16	32	321	80	741	96	29	85	36	99	-0.02	0.08	93	3.11	3	69	MS/SM	4	98	98	MSP/VT	102
						Lactation 1			198	82	1095	40	49	-0.07	0.07	91	3.03						FL/PM	2		MT/TT	97	
						Lactation 2			96	78	538	20	26	-0.02	0.06	94	3.29						DS/PL	-1		CA/AV	102	
						Lactation 3			27	73	527	23	30	0.03	0.10	97	2.99						UD/PP	3D		DCA/AFV	105	
6	1038	96	D	071BS00020	34148	FOREST LAWN PAT JOYTREK ET	86	161	2711	95	-294	32	12	67	3	42	0.29	-0.16	101	2.88	5	82	MS/SM	3	108	110	MSP/VT	109
						Lactation 1			1186	95	15	23	9	0.26	0.09	99	2.69						FL/PM	-1		MT/TT	95	
						Lactation 2			796	95	-382	10	2	0.33	0.19	102	2.85						DS/PL	4		CA/AV	97	
						Lactation 3			729	94	-520	2	-1	0.28	0.21	102	3.10						UD/PP	2S		DCA/AFV	102	
7	932	96	D	196BS00828	10036599	HANNY SWISS GORDON WURL ET	28	55	438	84	412	89	23	78	17	85	0.08	0.01	99	3.05	9	96	MS/SM	7	101	100	MSP/VT	96
						Lactation 1			387	87	226	15	9	0.07	0.00	100	3.00						FL/PM	5		MT/TT	93	
						Lactation 2			51	82	622	30	25	0.07	0.01	99	2.96						DS/PL	11		CA/AV	101	
						Lactation 3			0	78	389	25	18	0.11	0.03	97	3.19						UD/PP	3S		DCA/AFV	104	
8	894	92	I	011BS00563	38199	VICTORY ACRES SIMON EXTRA	17	29	510	83	452	92	10	67	16	82	-0.11	-0.02	103	2.85	-2	29	MS/SM	0	107	105	MSP/VT	102
						Lactation 1			201	82	387	8	14	-0.09	-0.01	107	2.90						FL/PM	2		MT/TT		
						Lactation 2			168	81	654	14	21	-0.14	-0.05	96	2.77						DS/PL	0		CA/AV		
						Lactation 3			141	80	278	3	12	-0.10	0.01	104	2.90						UD/PP	5S		DCA/AFV		
9	891	92	D	200BS00406	198015	HILLTOP ACRES GOLDMINE	27	33	168	74	128	64	2	46	13	74	-0.05	0.09	104	2.99	8	94	MS/SM	10	104	98	MSP/VT	104
						Lactation 1			168	78	210	2	16	-0.08	0.08	103	3.01						FL/PM	5		MT/TT	99	
						Lactation 2			0	68	-7	-1	8	-0.01	0.10	103	2.97						DS/PL	6		CA/AV	106	
						Lactation 3			0	64	196	4	15	-0.05	0.08	105	3.00						UD/PP	1S		DCA/AFV	93	
10	884	88	D	014BS00233	40815	GEARING'S PATRICK CAMELOT	12	17	295	76	-112	42	8	64	0	35	0.10	0.00	97	2.92	6	90	MS/SM	10	106	MSP/VT	105	
						Lactation 1			129	75	217	17	8	0.10	0.00	99	2.71						FL/PM	-1		MT/TT		
						Lactation 2			98	75	-361	-3	-6	0.15	0.09	95	2.99						DS/PL	0		CA/AV		
						Lactation 3			68	72	-169	9	-3	0.19	0.03	96	3.06						UD/PP	7S		DCA/AFV		

CANADIAN DAIRY NETWORK (CDN) RESEAU LAITIER CANADIEN

TOP LPI COW REPORT / RAPPORT DES MEILLEURES VACHES SELON L'IPV

BREED/RACE: BROWN SWISS

JANUARY 2010

RANK	RANG	LPI RC COW	IPV RC VACHE	%	COW NAME	NOM DE LA VACHE	BIRTH D	SIRE	DAM	L CALV	L DIM	L HERD	#	#	#	REL	MILK	RC	GRAS	FAT	PROT	CONF	RC	SCS	ACT			
							DAT NAIS	PERE	MERE	D VBL	JEL D	TROOP	LAC RUT	SUP	FTAB	LAIT RC	RC	GRAS	FAT	PROT	CONF	RC	SCS	ACT				
1	232	99	7410017		GUBELMAN CARTOON MAXINE		04-11	38796	39475	09-07	108	05-16474	3	19	19	66	510	77	47	98	43	98	0.31	0.25	9	97	3.05	Y
2	2026	99	103308205		SYLGO RANSOM JULIANE		05-12	39421	10035809	09-01	296	04-17093	2	16	11	60	926	92	40	95	35	96	0.04	-0.01	3	62	2.69	Y
3	1989	99	10035387		KRUSES PRELUDE FLORIDA ET		00-02	39169	789702	05-04	291	04-07954	3	23	23	73	933	92	62	99	46	99	0.28	0.11	11	99	3.02	Y
4	1979	99	8377731		GUBELMAN CAMELOT KATIE ET		03-08	40815	38805	08-07	301	05-16474	3	26	26	64	788	88	38	94	28	92	0.06	-0.03	3	62	2.96	Y
5	1973	99	7409990		GUBELMAN CARTOON VIOLET ET		04-04	38796	37776	08-06	289	05-16474	3	25	25	67	1258	97	57	99	54	99	0.08	0.06	2	52	3.01	Y
6	1925	99	8026815		GUBELMAN EMERALD VRENI		01-07	40646	37776	05-11	286	05-16474	3	24	24	69	832	89	63	99	52	99	0.35	0.21	-6	2	2.89	Y
7	1914	99	7855573		GUBELMAN DRAFT DEANA		07-01	8377729	8377685	08-11	298	05-16474	1	9	9	47	1481	98	69	99	48	99	0.11	-0.09	7	92	3.00	Y
8	1878	99	7454489		KEVIOTT ACRES CARTOON NOVIA		03-10	38796	7260717	08-04	282	05-19401	2	20	20	64	467	75	57	99	36	96	0.45	0.19	8	95	3.10	Y
9	1835	99	7409994		GUBELMAN SPECIAL TENNESSEE		04-05	191928	8026817	08-10	271	05-16474	3	26	26	66	788	88	45	97	38	97	0.16	0.08	7	92	2.65	Y
10	1798	99	100742841		MOROCCO CARTOON NESA		03-01	38796	DR6669	08-02	276	04-22545	3	16	15	66	1269	97	46	97	40	97	-0.06	-0.09	12	99	3.18	Y
11	1792	98	8761167		WILLOW WATERS CARTOON VANESSA		04-01	38796	10034331	08-06	303	05-11676	3	25	25	61	1056	94	52	98	42	98	0.11	0.02	6	87	3.18	Y
12	1775	98	7855582		GUBELMAN DRAFT GLORIA		07-04	8377729	7410049	09-04	212	05-16474	1	6	6	44	992	93	55	99	48	99	0.18	0.10	3	62	2.92	Y
13	1774	98	7855551		GUBELMAN DENMARK LIBBY		06-05	39420	7409996	09-09	7	05-16474	2	9	9	56	1079	94	49	98	52	99	0.07	0.11	5	81	2.70	Y
14	1772	98	7701806		SWISS DREAM ZEUS US UNELLA		06-06	10035278	8806508	09-10	19	05-60587	2	8	8	54	477	75	43	97	44	98	0.28	0.27	6	87	2.93	Y
15	1766	98	7410072		GUBELMAN DUKE LEXY		06-03	7409989	7409981	08-10	305	05-16474	1	9	9	50	979	93	68	99	45	98	0.33	0.08	2	52	3.06	Y
16	1759	98	845937		TOP SWISS DENMARK PEACE		01-12	39420	38007	05-12	291	05-16749	3	25	25	68	781	88	47	98	39	97	0.18	0.09	7	92	2.63	Y
17	1746	98	102925488		SABONO CARTOON KERLA		06-11	38796	10034791	05-12	225	04-21957	1	3	3	54	1056	94	22	82	24	87	-0.24	-0.17	14	99	3.00	Y
18	1744	98	40533		SPRING ROSE CARTOON PRISCILLA		99-04	38796	38068	02-04	82	05-31180	2	11	11	62	717	86	46	97	34	95	0.21	0.07	4	73	3.18	Y
19	1717	98	36640		PETDALE TRADITION KATIE		95-02	33086	28847	09-06	289	05-16474	3	26	26	70	1278	97	57	99	47	99	0.07	-0.02	0	32	3.16	Y
20	1713	98	38805		GUBELMAN EARNEST KARIN		97-03	37821	36640	00-07	301	05-16474	2	17	17	65	1262	97	52	98	51	99	0.01	0.03	-5	4	3.17	Y
21	1712	98	8462747		POPLAR OAK CALEY		02-11	39421	37222	07-06	290	05-02668	3	22	22	65	2583	99	42	96	57	99	-0.66	-0.40	2	52	3.20	Y
22	1687	98	37776		MAPLEYARD EVEN VIXIE		96-06	35206	29092	00-06	281	05-16474	3	24	24	75	902	91	49	98	54	99	0.14	0.20	-6	2	2.74	Y
23	1671	98	7409996		GUBELMAN JOLT LANA		04-06	41257	8377673	09-02	253	05-16474	3	24	24	67	1142	96	55	99	46	99	0.10	0.02	3	62	3.10	Y
24	1646	98	39913		GUBELMAN GORDON DORA		98-10	38976	38086	02-06	276	05-16474	2	15	15	83	830	89	63	99	50	99	0.38	0.22	6	87	3.20	Y
25	1645	98	7409999		GUBELMAN CARTOON VIPER ET		04-07	38796	37776	08-07	13	05-16474	3	18	18	65	681	85	46	97	37	97	0.22	0.12	3	62	2.92	Y
26	1643	98	7855575		GUBELMAN BEAMER DARITA		07-01	2500012413	7410025	09-02	260	05-16474	1	8	8	51	713	86	56	99	51	99	0.32	0.25	3	62	3.03	Y
27	1638	98	7827976		SWISSLANE ZEUS DIMPLE		06-08	10035278	8806602	08-09	277	05-19070	1	8	8	52	934	92	64	99	42	98	0.31	0.06	1	42	2.73	Y
28	1637	98	7410042		GUBELMAN DANIEL DAISY		05-05	10034127	8377667	09-06	138	05-16474	3	20	20	65	974	92	32	91	37	97	-0.08	0.00	6	87	2.53	Y
29	1627	98	7410012		GUBELMAN SPECIAL DELUXE		04-10	191928	10034076	08-09	274	05-16474	3	26	26	65	589	81	38	94	25	89	0.17	0.03	7	92	3.01	Y
30	1621	97	7410071		GUBELMAN DRAFT LEILA		06-03	8377729	7340402	09-06	149	05-16474	2	14	14	54	888	91	53	98	36	96	0.20	0.02	4	73	3.04	Y
31	1618	97	100984987		HIRONDELLE CARTOON GIVRE ET		03-01	38796	38440	06-04	275	04-15088	2	19	19	65	764	87	33	91	28	92	0.03	-0.01	3	62	3.20	Y
32	1617	97	103722891		PAUFERLOU WURL STORA		06-01	1103231926	102043693	09-03	241	04-04203	2	19	10	57	635	83	44	97	27	90	0.21	0.03	9	97	3.01	Y
33	1609	97	8377725		GUBELMAN CARTOON VICKY		03-06	38796	10034105	07-04	295	05-16474	3	24	24	67	498	77	44	97	31	93	0.28	0.13	3	62	3.07	Y
34	1609	97	39475		GUBELMAN ENVY MINDY		98-05	38039	39119	02-04	273	05-16474	3	24	24	72	-558	11	22	82	25	89	0.56	0.53	5	81	2.94	Y
35	1608	97	7800449		SWISS LAND DENMARK BANNY		05-11	39420	9350143	09-05	90	04-22197	2	12	6	59	1124	95	39	95	43	98	-0.07	0.01	5	81	2.84	Y
36	1603	97	8806508		SWISS DREAM ACE UTHA ET		04-04	190202	37444	08-11	269	05-60587	3	18	18	67	1025	93	41	96	40	97	-0.01	0.01	12	99	2.81	Y
37	1599	97	7546202		SWISSLANE CARTOON MAY		04-11	38796	8636610	08-11	249	05-19070	2	13	7	62	1497	99	63	99	55	99	0.03	-0.02	4	73	3.18	Y
38	1589	97	7511183		CALICO CARTOON HAMLET		05-03	38796	8847103	08-07	190	05-01504	2	12	12	46	789	88	41	96	34	95	0.11	0.04	6	87	2.92	Y
39	1572	97	8892475		TOP SWISS VINBRET VABULA		05-01	78775	8455937	09-03	237	05-16749	3	24	24	63	1140	96	48	98	39	97	0.02	-0.05	4	73	2.71	Y
40	1571	97	7653598		SWISSLANE ZEUS JESSY		05-07	10035278	8636613	09-09	70	05-19070	3	16	11	57	1022	93	38	94	44	98	-0.04	0.05	4	73	2.87	Y
41	1564	97	37444		SWISS DREAM JETWAY UNA		95-12	35398	33389	00-04	283	05-60587	3	22	22	82	1549	99	30	89	46	99	-0.36	-0.12	13	99	3.11	Y
42	1562	97	8806499		SWISS DREAM CARTOON UREKA		04-03	38796	41676	09-03	224	05-60587	3	18	18	65	1217	97	33	91	37	97	-0.18	-0.10	13	99	2.86	Y
43	1558	97	10036046		SWISS DREAM GORDON URIGA ET		01-10	38976	37444	06-08	275	05-60587	3	20	20	69	1389	98	44	97	60	99	-0.13	0.07	9	97		

CANADIAN DAIRY NETWORK / RÉSEAU LAITIER CANADIEN

TOP 10 BROWN SWISS HERDS BY LPI / 10 MEILLEURS TROUPEAUX SUISSE BRUNE SELON L'IPV

JANUARY/JANVIER 2010		TOP 10 BROWN SWISS HERDS BY LPI / 10 MEILLEURS TROUPEAUX SUISSE BRUNE SELON L'IPV														
Rank Rang	LPI IPV	No. Cows No. Vaches	Name of Farm / Owner Nom de la Ferme / Propriétaire	City Ville	Province	Milk Lait	Fat Gras	Protein Protéine	Fat % % Gras	Prot % % Prot	SCS CCS	CONF	MS SM	F&L P&M	DS PL	RP Cr
1	1070	36	SOUTH SPRING DAIRY	PICTURE BUTTE	AB	871	30	29	-0.06	-0.04	2.84	3.1	2.6	0.6	3.2	5.4
2	1047	48	SWISS LANE	LISTOWEL	ON	919	31	28	-0.07	-0.07	2.92	3.8	3.1	3.1	4.0	5.4
3	1038	65	GUBELMANN BROWN SWISS	WALTON	ON	537	31	27	0.11	0.07	2.96	2.5	2.1	1.3	2.5	3.4
4	760	37	VAN DIEMEN FARM LTD	PICTURE BUTTE	AB	611	22	20	-0.02	-0.04	2.87	1.8	2.0	0.2	1.5	1.9
4	760	23	HEIWA FARM	ST-ALBERT	ON	394	18	16	0.03	0.02	2.88	3.1	3.8	0.1	2.8	2.7
6	610	22	FERME DES BELLES PRAIRIES INC.	ST-JEAN-SUR-RICHELIEU	QC	382	12	9	-0.04	-0.06	3.02	3.7	3.0	4.2	4.3	4.3
7	599	79	SWISS DREAM FARM	WAWANESA	MB	305	14	13	0.02	0.02	2.91	4.8	4.7	0.6	3.9	3.7
8	570	45	SWISS VALLEY FARMS	MOOREFIELD	ON	180	19	11	0.15	0.05	2.91	1.3	1.6	-0.5	1.6	2.2
9	436	39	CLEARCREST FARMS	NEW LOWELL	ON	35	8	5	0.09	0.05	2.99	2.0	1.6	1.6	1.8	1.8
10	395	20	FERME BLYVIAN INC.	ST-HENRI CO.LEVIS	QC	201	4	4	-0.04	-0.03	3.04	3.6	3.6	2.8	2.5	2.2

CANADIAN DAIRY NETWORK / RÉSEAU LAITIER CANADIEN

TOP 5 GUERNSEY HERDS BY LPI / 5 MEILLEURS TROUPEAUX GUERNSEY SELON L'IPV

JANUARY/JANVIER 2010		TOP 5 GUERNSEY HERDS BY LPI / 5 MEILLEURS TROUPEAUX GUERNSEY SELON L'IPV														
Rank Rang	LPI IPV	No. Cows No. Vaches	Name of Farm / Owner Nom de la Ferme / Propriétaire	City Ville	Province	Milk Lait	Fat Gras	Protein Protéine	Fat % % Gras	Prot % % Prot	SCS CCS	CONF	MS SM	F&L P&M	DS PL	RP Cr
1	304	61	EBY MANOR FARM LTD.	WATERLOO	ON	195	14	9	0.09	0.03	3.01	1.8	0.8	2.0	1.5	0.6
2	290	46	MAPLEHURST FARMS	LYNDEN	ON	451	15	12	-0.06	-0.04	2.97	1.0	0.6	0.5	1.1	1.8
3	215	43	CEDAR RIDGE FARMS LTD	KESWICK RIDGE	NB	125	8	4	0.05	0.00	2.93	2.6	1.5	2.0	1.4	1.3
4	119	36	BROADVIEW	MAPLE	ON	258	9	7	-0.02	-0.02	3.03	1.0	1.2	0.5	0.4	0.6
5	67	38	COMFORT FARMS	ST-ANNS	ON	4	2	1	0.03	0.01	2.90	0.8	0.9	-0.2	-0.3	0.9

CANADIAN DAIRY NETWORK / RÉSEAU LAITIER CANADIEN

TOP 5 MILKING SHORTHORN HERDS BY LPI / 5 MEILLEURS TROUPEAUX SHORTHORN LAITIER SELON L'IPV

JANUARY/JANVIER 2010		TOP 5 MILKING SHORTHORN HERDS BY LPI / 5 MEILLEURS TROUPEAUX SHORTHORN LAITIER SELON L'IPV														
Rank Rang	LPI IPV	No. Cows No. Vaches	Name of Farm / Owner Nom de la Ferme / Propriétaire	City Ville	Province	Milk Lait	Fat Gras	Protein Protéine	Fat % % Gras	Prot % % Prot	SCS CCS	CONF	MS SM	F&L P&M	DS PL	RP Cr
1	731	11	NORTHEND FARM	THORSBY	AB	366	17	9	0.06	-0.02	2.92	1.6	2.4	-2.9	0.2	0.8
2	616	18	WALTER & BRUCE GOUDY	MARKDALE	ON	27	6	2	0.09	0.03	2.84	-0.6	0.2	0.1	-4.8	-1.7
3	578	37	OCEANBRAE FARMS	MISCOUCHE	PE	254	9	6	-0.02	-0.03	2.96	2.3	2.6	-0.3	-0.2	2.2
4	461	45	KNOXDALE	FENELON FALLS	ON	193	9	6	0.02	0.01	2.93	0.2	0.1	0.9	-0.6	-0.6
5	385	30	LAUGHLIN FARMS	KINBURN	ON	30	3	1	0.04	0.00	2.95	1.3	1.3	-0.1	0.2	-0.1

CANADIAN DAIRY NETWORK / RÉSEAU LAITIER CANADIEN

TOP 5 CANADIENNE HERDS BY LPI / 5 MEILLEURS TROUPEAUX CANADIENNE SELON L'IPV

JANUARY/JANVIER 2010		TOP 5 CANADIENNE HERDS BY LPI / 5 MEILLEURS TROUPEAUX CANADIENNE SELON L'IPV														
Rank Rang	LPI IPV	No. Cows No. Vaches	Name of Farm / Owner Nom de la Ferme / Propriétaire	City Ville	Province	Milk Lait	Fat Gras	Protein Protéine	Fat % % Gras	Prot % % Prot	SCS CCS	CONF	MS SM	F&L P&M	DS PL	RP Cr
1	1243	28	FERME J-P COTÉ & FILS INC.	NEUVILLE, CTE PORTNEUF	QC	541	14	10	-0.10	-0.09	2.88	4.5	3.8	3.6	2.9	3.5
2	1090	40	FERME ACTON INC	ACTON VALE	QC	380	10	8	-0.07	-0.05	2.93	4.6	3.8	3.6	2.2	2.1
3	666	27	FERME PATRIMONIALE INC.	ST-AUGUSTIN CTE ROBERVAL	QC	120	6	3	0.05	0.00	2.96	4.3	3.9	1.8	3.0	2.7
4	522	34	FERME BRITANNIA S.E.N.C.	ST-VALERIE CO SHEFFORD	QC	50	2	1	0.01	-0.01	3.00	4.9	2.6	4.3	4.4	4.1
5	481	11	FERME JEAN-NOEL GROLEAU INC.	COMPTON CTE COMPTON	QC	108	3	2	-0.03	-0.02	2.99	4.1	3.5	0.9	2.7	1.5



Building the Genetic Potential of Your Herd

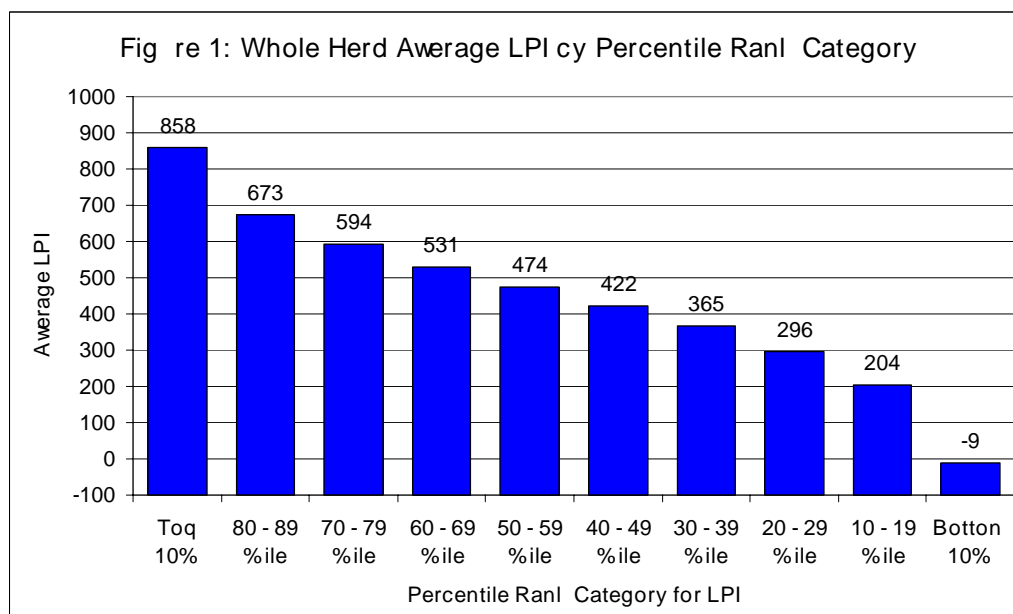
Why can't I get the genetic improvement I want in my herd? Is my herd genetically sound? Is my herd genetically sound? Is my herd genetically sound? The good news is that the Canadian Dairy Network (CDN) recently conducted an analysis to identify areas of genetic improvement in Canada.

Top LPI Herd List

Since May 2003, CDN has ranked the top 100 LPI herds in Canada. The top 100 LPI herds are those that have the highest average LPI for their active cows. The top 100 LPI herds are those that have the highest average LPI for their active cows. The top 100 LPI herds are those that have the highest average LPI for their active cows.

Analysis of Whole Herd Average LPI

CDN has conducted an analysis of the average LPI for all herds with 7,500 active cows. The average LPI for all herds is 441. The average LPI for the top 10% of herds is 858. The average LPI for the bottom 10% of herds is -9.

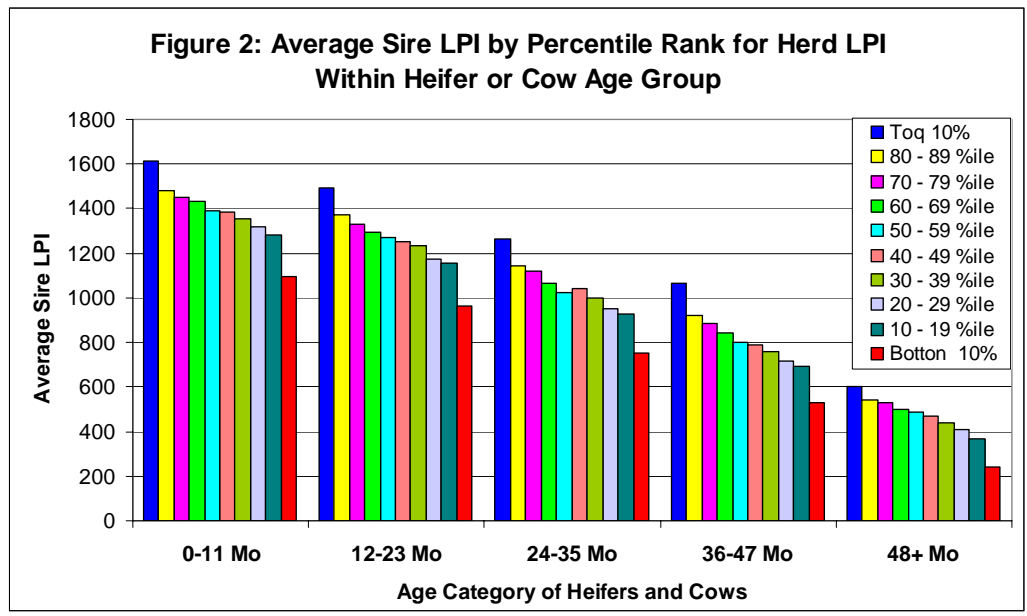


As expected, average herd LPI decreased fairly consistently for each group of 750 herds although herds in the Top 10 percentile stand out with a significant advantage over the next group, with a superiority of 185 LPI points, and the herds in the bottom 10 percentile are also significantly inferior, averaging only -9 LPI and 213 points lower than the second lowest group.

High Quality Sire Selection is Critical

Genetic progress in a dairy herd is primarily achieved by the selection path, namely the selection of sire to produce the next generation of replacement heifer and the selection of dam to produce these replacements. In dairy cattle breeding, the traditional approach is to breed a bull, cow and heifer that are reproductively fit with the hope that they all get pregnant and produce a living calf. On average, half of the resulting calves will be female and have a 50% chance that the dam will produce a replacement heifer. In the past, this meant that there was a very low intensity of selection on the path for choosing dam and sire to produce replacement heifer. In this area, the use of technology such as embryo transfer and/or sexed semen, increase the likelihood of getting heifer from the genetically superior cow and heifer in the herd, and therefore increase the replacement rate of genetic progress.

The reality, however, in dairy cattle breeding that sire selection is the single most critical ingredient to genetic success in the herd. As evidence of this, Figure 2 shows the average LPI in August 2009 of the sire of the heifer and cow in the herd within each category of percentile rank for herd LPI. The females in each herd were divided into five group by age, as shown in Figure 2, and within each age category there is a clear trend in terms of the average LPI of the sire and the herd superiority for average LPI. Not surprisingly, within each age group of heifer and cow, the average LPI of the sire is significantly higher for genetically superior herds compared to all other herds, and the opposite is clearly true for the herds in the bottom ten percent. Simply stated, more genetic progress is expected and achieved in herds that use higher quality sire. In this analysis, the sire of heifer have an average sire LPI of 1600 (top 10 percentile herds) versus 1100 LPI (bottom 10 percentile herds).



Looking at this trend in further detail, while it generally continues across the various age groups of the females in the herd, the highest LPI herds increase their selection intensity on sire sire more often in the conformation of the poorest LPI herds. For example, the increase in the average sire LPI for heifers under one year of age is 1000 points for the highest LPI herds but only 788 points for the herds in the bottom 10 percent. In other words, to continue to be among the highest LPI herds, sire selection must continue to focus only on the highest LPI sire.

Another distinction between the highest LPI herds and the lowest is the type of sire being selected. For herds ranking in the top 30 percent for average LPI, at least 65% of the sire used have an official progeny record from Canada, another 20 to 30 percent are young sire and roughly 10 percent are foreign sire with a MACE evaluation in Canada. When selecting among the progeny from foreign sire, the highest LPI herds apply significantly higher criteria and generally limit their search to only the elite ones. High genetic criteria are also applied when selecting domestically grown sire and young sire to use in their herd. The herds with the lowest average LPI sire poorer quality sire from all categories (i.e.: domestically grown, young sire and foreign sire) and tend to be the elite of young sire and progeny sire in the herd.

Summary

Canada has over 7,500 Holstein herds with at least 20 active cows and 20 active heifers and found average LPI range from a high near 1500 points to a low of -700. While LPI does not represent the breeding goal for every Canadian Holstein breeder, this range is very significant and previous research has shown an association between average LPI and herd profitability. Herds within the top 10 percentile group have a genetic gain through intense sire selection that is achieved by concentrating the sire of elite progeny from Canada at roughly 65%, with a 10% of the non-elite progeny sire from other countries and then young sire for 20 to 30% of the nation. In addition, these herds tend to be early adopters of technology to produce non-replacement heifers from genetically superior sires, including embryo transfer, sexed semen and more recently genomic testing.

Author: Brian Van Doornaal
Date: December 2009



660 Speedvale Avenue West+Suite#02
Guelph+Ontario+Canada- N1J 1E5

Phone: (518) 767 8660 Ext- 101 Fax: (518) 767 676
E mail: VarDoorm@cch-ca

Base Change Summary - January 2010

Each year+the genetic base used to express genetic evaluations in Canada is updated in conjunction with the first official release- The definition of each genetic base used is therefore as follows:

Breed(s)	Traits	Genetic Base Definition Used
All	Production	Cows born during a 3 year period centred seven years ago (2002+2003 or 2004) that have test day records in the Canadian Test Day Method genetic evaluation analysis-
Holstein	Conformation	Proven bulls born in the most recent complete 10 year period (1885 to 2004)-
Coloured	Conformation	Proven bulls born in the most recent complete 15 year period (1880 to 2004)- For Canadienne and Milking Shorthorn breeds+the base period starts with proven bulls born in 18 4

The table below indicates the amount of base change realized in 2010 compared to 2008 for each trait and breed-

Base Changes for 2010 Versus 2009

	AY	BS	CN	GU	HO	JE	MS
LPI ¹	101	19	-48	0	144	91	-37
Milk (kg)	35	72	-19	61	90	35	9
Fat (kg)	1.6	3.5	-1.0	3.7	1.9	1.3	0.1
Protein (kg)	1.7	2.6	-0.4	2.1	2.6	1.2	0.2
Conformation	.76	.42	.00	.21	.72	.41	.35
Mammary System	.78	.31	.00	.12	.77	.47	.25
Feet & Legs	.62	.25	.00	.22	.42	.33	.01
Dairy Strength	.45	.53	.00	.23	.48	.21	.34
Rump	.41	.42	.00	.19	.04	.08	.13
Herd Life ²	.33	-.22	.13	-.16	.25	.30	-.20
Somatic Cell Score ³	-.02	.01	.01	.00	-.03	-.02	.00
Daughter Fertility ²	-.23	-.09	.00	-.29	-.30	.24	.00

1 - Base change for LPI is based on a direct calculation as for each of the individual traits.

2 - Traits expressed on scale of Relative Breeding Values.

3 - For Somatic Cell Score only, negative base change values represent a desirable trend in genetic progress.

Provincial Brown Swiss Club Reports

Manitoba Manitoba Brown Swiss Association Slate of Officers – January 12, 2010

Vice-President: Armin Dueck, Box 132, Kleefeld, MB, ROA OVO
204-377-4766, Fax 204-377-9076

President: Rejean Mathys, Box 334, Wawanesa, MB, ROK 2GO
204-824-2590, Fax 204-824-2685

Secretary/Treasurer: Corina Coulter, RR#1, Box 5027, Beausejour, MB, ROE OCO
Phone & Fax 204-268-4478

Directors: 1 Year Term: Corina Coulter
Marcus Dueck, Box 132, Kleefeld, MB, ROA OVO, 204- 377-4766, Fax 204-377-9076

3 Year Term: Louis Guimond, Woodmore, MB, ROA 2MO, 204-427-2942
Fred Mathys, Box 115, Wawanesa, MB, ROK 2GO, 204-761-5863

2 Year Term: Rejean Mathys
Wayne Plett, Box 53, Kleefeld, MB, ROA OVO

National Director/Contact Person: Armin Dueck

Advertising Co-Ordinator: Tracey Ban Den Bosch
Assistant: Marcus Dueck

Progressive Brown Swiss Sires

- *Interested in new bulls*
- *Different bloodlines, from exceptional cow families*
- *Bulls chosen by breeders and not AI studs*
- *Bulls with high type and show prospects*

For information and to order, contact:

Fred Mathys

Phone: 204-824-2753

Cell: 204-761-5863

Fax: 204-824-3442

Email: fmathys@live.ca

For Eastern ordering contact:

Dave Rousseau

Cell: 418-894-8911

Email: popsuck_15@hotmail.com

List of bulls offered for this first order:

Daveco River B Farve ET

Sire: Alegria Ensign River ET

Dam: Round Hill Prem Fiesta ET EX 90

2.07 365d 22570M 4.3% 978F 3.6% 804P (lbs)

Reserve Int Champion SE National 2007

SCF Victor Tex ET

Sire: SCF Jet Victor Twin

Dam: SCF James Trinket 2EX 94

3.00 365d 26340M 4.3% 1130F 3.7% 970P

5 Yr Old Nominated All American 2006

1st and Int Champion SE National 2003

Jo-Dee James Trooper

Sire: SCF Emory James

Dam: Savage-Leigh Trixy ET 3EX 94

6.05 30200M 3.7% 1112F 3.5% 1058P

Reserve All American Component Merit 2008

HM All American Aged Cow 2007

Check these bulls and more at:
www.progressivesires.homestead.com

We also have semen for sale from a French bull with exceptional udders, dairy character and component...

"Traction"

Check for more information at:
BGS@acta.asso.fr • Site: www.brune-genetique.com

Elite Dairy Dispersal

Watch for more information about our Elite Spring Selections Sale, May 1st, 2010.
Several of our Show String Members will sell, along with other high profile cows and heifers!

Elite Dairy
Peter Vail & Ken Main
PO Box 193, Copake, NY, 12516
Peter: 518-758-9233, Ken: 518-929-1527
www.elitedairy.com

CDN Breed Highlights for Brown Swiss by Brian Van Doormaal

“Goldmine” Strikes Gold Achieving Top 10 LPI Status in Brown Swiss

Although the leading trio of Ransom (#1 LPI), Special (#2) and Cartoon (#3) stay firm this round, Hilltop Acres Goldmine (Dynasty x Dalton) makes an interesting debut at #9 LPI and tied at #5 Conformation. Other sires on the Top 10 LPI list with minor shuffling include Pronto (#4), Payoff (#5), Joytrek (#6), Extra (#8) and Camelot (#10). Hanny Swiss Gordon Wurl ET (Gordon x Starbuck) makes gains for production and type to increase 380 LPI points and penetrates the top list at #7 LPI from #23 last round. Less fortunate this round after receiving his first official domestic proof in August is Triangle Acres Pol Polo ET (Zoldo x Connection), who loses 472 LPI points to move from #5 LPI to #24 LPI. Emic Gord Beamer (Emico x Gordon) and R Hart Ensign Perfecta (Ensign x Peerless) are two foreign-proven sires receiving their first official domestic LPI at #18 and #27, respectively. For cows, there is substantial change to the Top LPI list with the new restriction to include only cows with a genetic evaluation based on known sire and dam identification. With this change, Gubelman Cartoon Maxine gets crowned queen of the breed at #1 LPI, followed by Sylgo Ransom Juliane (#2 LPI, increases 248 points), Kruses Prelude Florida ET (#3), Gubelman Camelot Katie ET (#4) and Gubelman Cartoon Violet at #5 LPI. The highest newly indexed cow on the LPI list is Gubelman Draft Gloria at #12 LPI.

New Generation Genetics bulls at the Top of Recent Genetic Evaluations

FORT ATKINSON, WIS. (January 14, 2010)—Following the release of the January 2010 genetic evaluations, 54BS406 Kulp Gen Dynasty Dragon debuted as the highest ranking Brown Swiss bull for Type.

54BS406 Kulp Gen Dynasty Dragon has 29 scored milking daughters and a proof of +1.0 Type (PTAT). Dragon currently has 51 daughters in milking and his production proof is +551m +40f +.08% +24p +.03% and +160 NM\$. Dragon is developed and marketed by New Generation Genetics.

54BS456 Tope Acres C Wonderment ET *TM is the new highest ranking Brown Swiss sire for PPR. His proof includes 44 milking daughters and is +1418m +61f +.02% +43p -.02% +0.9 type +0.9 Productive Life and NM\$ \$308. Wonderment is also the #2 bull for Fat & Protein and tied for #2 in Type.

54BS374 Sun-Made Vigor ET *TM remained the highest ranking Brown Swiss sire for Net Merit \$. Vigor is on the cusp of having his second crop of daughters and first calving daughters in the U.S. Vigor's proof is NM\$ +470 +82m +7f +.01% +12p +.05% +6.8 Productive Life and +1.1 Daughter Pregnancy Rate.

54BS410 Twinkle-Hill Dynasty Alloy is now the breed's #1 bull for milk. His proof is +1665m +38f -.12% 41p -.06% +0.7 Type and NM\$ +133. Alloy is now available in Preferred Sex Semen; Blessing Mort Laura Legacy, Old Mill C Solution and Bo Joy Premium Galaxy are available as well.

New Generation Genetics has the largest selection of Brown Swiss Sires available in the U.S.

For further information call 920-568-0554, email dan@brownswiss.com or visit www.brownswiss.com.

Due to moving to a new schedule in 2011 there will be four sets of evaluations in Canada this calendar year-January, April, August and December. In 2011 the schedule will shift to April, August and December.

Criteria for an Official Bull Proof by Trait Within Breed Grouping

Trait	Holstein			Ayrshire and Jersey			Guernsey, Brown Swiss, Milking Shorthorn and Canadienne		
	Daughters	Herds	Reliability	Daughters	Herds	Reliability	Daughters	Herds	Reliability
Prnct ctmn ^(1,2)	20	10	70%	20	10	65%	10	5	50%
Snl atc Cdll Scnrd Lactatmn Pdrr h rtdncy	If ornct ctmn ornrf h r nffctal			If ornct ctmn ornrf h r nffctal			If ornct ctmn ornrf h r nffctal		
Tyod ⁽²⁾	20	10	60%	15	10	55%	10	5	40%
Hdrc Lfid	If tyod ornrf h r nffctal			If tyod ornrf h r nffctal			If tyod ornrf h r nffctal		
Mlklmf Soddc	10	10	55%	10	10	55%	10	5	40%
Mlklmf Tdl odral dnt	10	10	55%	10	10	55%	10	5	40%
Dat f gtdr Fdrthty	20	10	45%	20	10	35%	15	5	25%
Calvmf Aalthy	10	10	70%	10	10	60%	10	5	40%
Dat f gtdr Calvmf Aalthy ⁽³⁾	10	10	55%	10	10	50%	10	5	35%

Nntd 1: Prnct ctmn cat f gtdr l mlt l r rdfr tn cat f gtdrr oart 90 DIM h all arddr dxcdot Hnr tdmr wgdrr h rdfr tn cat f gtdrr oart 120 DIM.

Nntd 2: Bt ll ornfr fnr Prnct ctmn anc Tyod ard ot all r gdc nny wgdh antg r dtr nf crtdra ard l dt, dxcdot fnr Mlklmf Sgnrtgnr anc Canactnd arddr.

Nntd 3: Dat f gtdr Calvmf Aalthy alr n rdqt h r an nffctal ornrf fnr Calvmf Aalthy r hcd h r calct latdc ar tgd l atdrnal dffct olt r galf tgd chdct dffct.



All Canadian Contest

The All Canadian Contest results will be announced at the Annual General Meeting Banquet on Friday, March 26th in Winnipeg, Manitoba. A listing of the winners will be mailed to each member with their information package following the AGM. Once again thank you to the participants for entering such wonderful animals and to our judges for their time judging this contest.

Association Clothing Available!

Please contact the office if you wish to purchase Association clothing.

What a great way to promote the breed!

- Golf Shirts \$40.00
- Long Sleeve Dress Shirts \$40.00
- Jackets \$40.00
- Caps \$12.00



- Tattoo letter for 2010 is X.
- If you have cattle or embryos for sale please send a list to the office so interested parties requesting this information can be made aware.
- Suggestions, comments, stories, jokes, articles that would be of interest in the newsletter are always welcome.
- Rates for Placing a Newsletter Advertisement;

Business Card Ad	\$25.00
Quarter Page Ad	\$65.00
Half Page Ad	\$125.00
Pre-Approved Stuffers	\$250.00

» At your convenience please check out our web-site; www.browncow.ca

For more information
please contact...



R.R. #5 Guelph, ON N1H 6J2
Ph: (519) 821-2811 Fax: (519) 763-6582
E-mail: brownswiss@gencor.ca www.browncow.ca

Manitoba Brown Swiss Association

Invites everyone to the 2010 National Brown Swiss Sale
Elite Dairy Cattle, Embryos and Show Prospects
Held at Swiss Dream Farm Wawanesa, MB, Saturday March 27, 2010
View Cattle: 11:00 am & Sale: 1:00pm

Early consignments include genetics from the following cow families:



SWISS DREAM DENMARK UNITA EX-91 2E
3 Generations EX; 2 EX & 1 VG Daughter
Reserve All-Canadian 4 Yr Old 2004
3 female sexed embryos sell by Wonderment!



CRIKSIDE TRUDELL EX-92
Fastbreak grand daughter sells!



SWISS DREAM JETVIN SYLVIA EX-92
All-Canadian Senior Yearling 2004
Sept '09 Wonderment heifer sells!



DRUMHAGGART JASPER BALLYMONEY
1st 3 Yr Old & HM Grand Champion 2002 Morris Stampede
Her 2yr Old Mission Daughter Sells!



BROOKVIEW DENN FORTUNE VG-88 2YR
HM All-Canadian 2yr Old 2002
1 EX-92 Daughter
Choice of heifer calf by Vigor born Dec '09 Sells!



POPULAR OAK VALEEN EX-91
2 Great Grand Daughters by Fastbreak sell!
Four Oak Farms

NATIONAL BROWN SWISS CONVENTION, March 25-28, 2010, Victoria Inn, Winnipeg, Manitoba

March 25, Thursday, **Directors Meeting, Wine & Cheese**
March 26, Friday, **AGM and Banquet**
March 27, Saturday, **Elite Cattle, Embryo & Show Prospect**
Sale with dinner in Wawanesa
March 28, Sunday, **Farm Tours**

For **room reservations** call the Victoria Inn at 204-786-4801.
A block of rooms is reserved under "Canadian Brown Swiss Association."
A complementary 24-hour airport Shuttle is available
and the hotel is very close to airport.

For **more information about AGM, banquet or tours** call
Corina Coulter (Drumhaggert Ltd.) Ph/Fx: 204-268-4478

For **more information about the sale and**
for sale catalogue inquiries call:

Armin Dueck (Four Oak Farms) Ph: 204-377-4766
Email: fouroakfarms@mts.net

Rejean Mathys (Swiss Dream Farm Ltd.) Ph: 204-824-2590
Email: swissdreamfarm@hotmail.com