

NEWSLETTER

SEPTEMBER 2018



Registrar & Administrative Services

For general inquiries, like registrations and transfers, contact us in your preferred form of communication.

If you require to speak directly — call us at 519-756-8300.

- ◇ Annie Côté is at extension 277.
- ◇ Donald Caron is at extension 223.

Canadian Brown Swiss and Braunvieh Association

20 Corporate Place
Brantford, ON, N3T 5R4

Secretary Manager:

Holstein Canada
Donald Caron is your designated person

Office Hours:

M - F 9:00 am - 5:00 pm

Contact Info



519-756-4720



519-763-3502



brownswiss@holstein.ca

MESSAGE FROM OUR PRESIDENT

Ladies and Gentlemen, Breeders and Supporters,
Sponsors and Associates of all ages,

The Board of directors of the CBS&BA welcome you to a new era. This newsletter represents the first collaborative effort of our new partnership with Holstein Canada.

I would like to welcome Donald Caron as the new Secretary Manager of our Association. Donald has promised us “integrity, professionalism, dependability” and “lots of mistakes”. But he apologizes in advance for these mistakes and guarantees his hard work to correct them as we move forward in this new adventure.

In the next few months, the Brown Swiss Herd book will be switching over to the Abri system. The Canadienne, Guernsey, Milking Shorthorn breeds will be switched over as well. This will allow for a standardized system within the industry.

2018 has had a great deal of change for our association. Change can be scary and present difficulties, or it can be seen as an opportunity. An opportunity to come together and support the CBS&BA in the decisions it makes, an opportunity to participate in the direction it takes and an opportunity to help mould the Association itself.

The success of the Association moving forward will be determined by how well we seize these opportunities.

Ken Drummond



It's Fair Season—be sure to support your local fairs.

MESSAGE FROM ONTARIO

Greetings to fellow Brown Swiss Breeders from Ontario. We are enjoying a beautiful hot summer in Ontario. Our summer picnic was held at the home of the Rechsteiners near Molesworth. Thomas Rechsteiner and his family served us a barbecue lunch. They are farming 300 acres and milk 80 cows, half of which are Brown Swiss and half Holsteins.

At the picnic, we chose our new Brown Swiss Miss for the year. Sonja Rechsteiner is 15 years old, and is in Grade 11. She is working on training calves for the Hanover Fair. Sonja milks in the evenings and feeds calves. Our outgoing Swiss Miss Katja, presented the sash and tiara to her sister. We thank the Rechsteiner girls for helping out the breed at our Fairs.

I would like to thank Jessie Weir for her friendship and help over the years that we worked together. We miss you Jessie and wish you and your family the best always.

We will sadly miss Norma Mason who passed away this year. Bruce and Norma are life-long friends and supporters of the Brown Swiss members across Canada.

We are looking forward to showing off our beautiful Brown Swiss at our two main fairs, one at Hanover in August and one in Kincardine on Saturday, September 1. That's when we know summer is over. We will also be getting together at our Annual Meeting on Saturday, November 24.

We are looking forward to seeing our friends in British Columbia in the spring of next year at the C.B.S.B.A. Annual General Meeting.

Tracy Reid
Ontario Brown Swiss Association



2018 Brown Swiss Miss Sonja Rechsteiner with 2017 Brown Swiss Miss Katja Rechsteiner.

MESSAGE FROM ALBERTA

A summary of events for the year will be available in the December newsletter.

Best Regards to all our fellow Brown Swiss members.

Verena Peden
Alberta Bruanviah Association

MESSAGE FROM QUÉBEC

BH1 and BH2 Haplotypes: Effects on Fertility and Economic Impacts vs Genetic Gain for the Brown Swiss breed

In 2016 in Quebec, Valacta reported an average age of 27 months at first calving for the Brown Swiss breed. The best performing producers for this breed had an average age of 23 months (90th percentile) while others had lower results with an average age of 30 months (10th percentile). This significant gap combined with a high calving interval within the Brown Swiss breed (434 days) could jeopardize the breeders' objectives of competitiveness and profitability.

Recent genomic studies have identified the gene responsible for embryonic mortality within the Brown Swiss breed (BH1 Haplotype) and the one responsible for stillbirth – when a calf dies shortly after birth or by abortion at 7-8 months of gestation (BH2Haplotype). These haplotypes are estimated to occur in 5% to 35% of the population within each year of birth. Other studies link the presence of these genes in the breed to its known reproductive challenges. We do not know the precise frequency of these haplotypes within the Brown Swiss population in Quebec, it is therefore difficult for us to assess the associated economic impact and genetic gain.

Of the 130 Quebec herds with at least one Brown Swiss animal, we were able to collect only 699 samples, bringing the number of genotyped animals in Quebec to more than 1150. However, we could only use 95% of them in our study, as for some of them, it was impossible to identify the presence or absence of the haplotype at 99%. The majority of these animals have a purebred level of 75% or less. However, using the Canadian Dairy Network (CDN) database, we were able to add 18,530 Brown Swiss males for analysis purposes.

Frequency of BH1 and/or BH2 Haplotypes

Since only 10% of the Brown Swiss population in Canada is genotyped, the frequency of BH1 and BH2 haplotypes is based on the parent average for more than 90% of the population. To know the gap between the theoretical and actual frequencies within the Brown Swiss population in Quebec, we calculated the theoretical value for each individual on the grounds that none of the females had been genotyped.

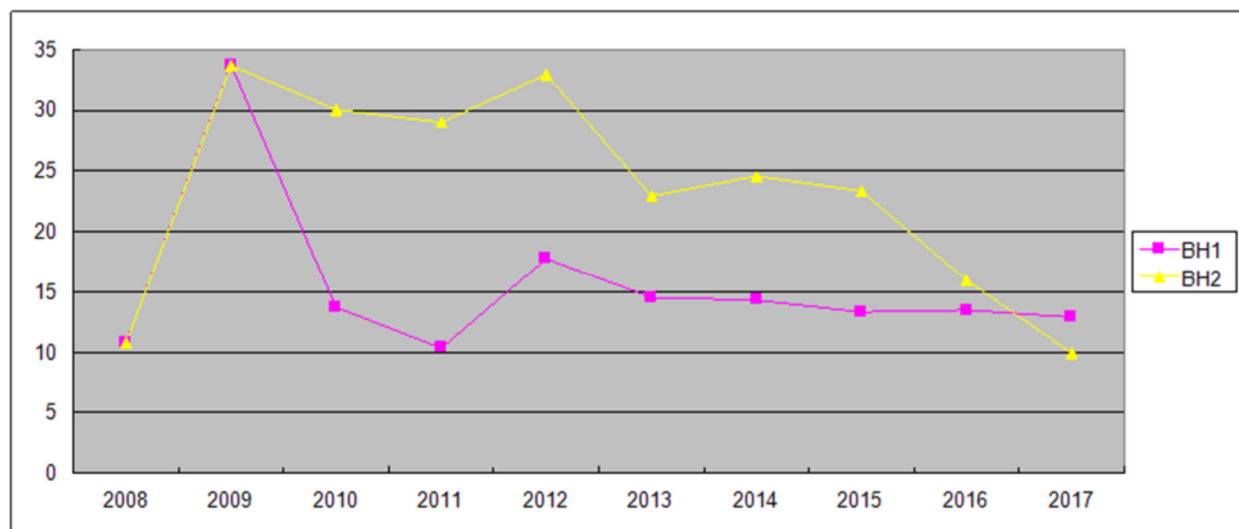
Table 1. Theoretical and actual frequencies within the Brown Swiss population in Quebec

Frequency	BH1	BH2
Parent Average	16.38%	22.15%
Genomics	14.19%	21.97%

The following graphs show the frequency of the BH1 haplotype, which goes back to *West Lawn Stretch Improver*, born in 1972. Since 2010, the frequency has averaged 13.5%, but peaked at 34% in 2009 for the Brown Swiss in Quebec. Over the past 30 years, it has ranged from 6.5% to 22% within the male population worldwide. Today, *Sun-Made Vigor ET BH1* has the greatest impact on the frequency of this haplotype in the breed (26,068 daughters and 81 sons in the United States as well as 444 daughters and 20 sons in Canada as of February 2018).



Graph 1: BH1 & BH2 Frequency within the female population in Quebec



Graph 2: BH1 & BH2 Frequency within the male population worldwide



The frequency of the BH2 Haplotype remained fairly high from 2009 to 2012 (+30%), but there has been a decrease year after year within the female population in Quebec. The changes are highly variable within the male population. The BH2 Haplotype goes back to *Rancho Rustic My Design*, born in 1963. Today however, *R N R Payoff Brookings ET* BH2 is highly present in Canadian pedigrees.

For the Brown Swiss sire population sold in Canada, the frequency of BH1 and BH2 Haplotypes is at 11.32% and 9.84% respectively.



Haplotype vs Fertility

Initially, our objective was to estimate the 56-day non-return rate for BH1 animals 1% vs BH1 99% using the CDN database. CDN informed us that there was insufficient data in the database for us to obtain results with a significant difference and we should expect similar results as reported in the 2016 U.S. study by J.B. Cole, D.J. Null and P.M. VanRaden.

Table 2. Effect of the minor allele for recessive haplotypes on phenotypes adjusted for non-genetic factors for heterozygote daughters out of heterozygote sires

		Trait							
		Milk (kg)	Fat (kg)	Protein (kg)	CSC	DS (mo)	DPR (%)	CCR (%)	HCR (%)
	N	628	628	628	600	173	427	427	427
BH1	Effect	-160.09	2.99	.83	-.003	3.89	4.18	5.07	3.69
	SE	157.78	5.99	4.05	.089	2.50	4.67	8.53	3.33
	N	848	848	848	813	286	575	575	575
BH2	Effect	-57.83	-3.91	4.22	-.023	-3.30	-1.69	-4.47	0.89
	SE	111.48	5.12	3.48	.077	1.74	4.36	6.62	3.03

VanRaden et al. (2011b) reported a negative effect of BH1 on the sire's conception rate, while actual results show positive – but not significant – results of the phenotypic effect of BH1 on daughter fertility. The genetic effects were not significant and the estimates were not desirable for DPR and CCR, but were favourable for HCR. The BH2 Haplotype is not significantly associated with the traits included in our study, although Schwarzenbacher et al. (2012) reported significant phenotypic effects on stillbirth and calf survival for at-risk matings.

In our study, we used 839 cows with Canadian GEBVs or GPAs for validation purposes. Knowing that the herd management factor can influence the age at first calving as well as calving intervals, we focused on herds with more than 25 females (Table 4). As you can see, the results vary from farm to farm. Given that some farms have a high % of genotyped animals, it is logical to assume that there are no homozygous matings. This could explain the difference between VanRaden's two studies on the effect of BH1. In 2011, matings were made at random without considering the haplotype, which is no longer the case today.



Table 3. Haplotype effect on average age at first calving and on calving intervals in the Brown Swiss breed in Canada

		1 st calf	2 nd calf (interval)	3 rd calf (interval)
Canada	BH: 1%, 1%	25	39 (424)	54 (436)
BH: 16%, 23%	BH: 99%, -%	26	39 (420)	52 (405)
839 animals genotyped	BH: -, 99%	25	39 (423)	53 (435)
Herd #1	BH: 1%, 1%	25	38 (432)	56 (497)
BH: 7%, 4%	BH: 99%, -%	29	42 (380)	--
34 animals genotyped	BH: -, 99%	25	45 (608)	61 (487)
Herd #2	BH: 1%, 1%	25	41 (464)	60 (380)
BH: 23%, 26%	BH: 99%, -%	26	39 (408)	53 (444)
40 animals genotyped	BH: -, 99%	24	37 (411)	57 (548)
Herd #3	BH: 1%, 1%	25	41 (431)	55 (481)
BH: 15%, 29%	BH: 99%, -%	29	41 (355)	54 (426)
28 animals genotyped	BH: -, 99%	24	38 (411)	56 (487)
Herd #4	BH: 1%, 1%	23	37 (406)	49 (405)
BH: 25%, 20%	BH: 99%, -%	24	39 (409)	53 (373)
62 animals genotyped	BH: -, 99%	24	38 (382)	51 (345)
Herd #5	BH: 1%, 1%	24	37 (389)	51 (422)
BH: 37%, 41%	BH: 99%, -%	25	38 (408)	48 (380)
27 animals genotyped	BH: -, 99%	25	39 (408)	51 (448)

Statistically, considering the frequency of haplotypes in the female population in Quebec vs the frequency of haplotypes among available AI sires, the risks of having a lethal homozygous mating are 3.19% for BH1 and 3.98% for BH2. For an average herd of 30 cows with replacements, this amounts to an average of 1.5 at-risk matings per year. Those are two similar %, but they have very different economic impacts – lost production differs from one haplotype to the next. With BH1, this could be rectified at the next service by using a negative BH1 sire – i.e. 25-day of lost production. With an average income per cow of \$3/day, we are talking about \$75. With BH2, it will all depend on how the animal reacts after premature birth i.e. no milk production or a 50% yield, 75% if you are lucky. When averaged and without any complications, this represents an approximate loss of \$500. This economic loss can be avoided by making selective matings instead of random matings.



Haplotype vs Genetic Gains

In 2014, in order to inform the Brown Swiss breeders about what these haplotypes mean, we published a column entitled "Reducing calf losses through genomic testing"

Our position at the time was as follows:

- 1) that the list of BH1 and/or BH2 carrying sires be made available via CDN, CRLC and CBSA to all Brown Swiss breeders;
- 2) that BH1 carrying sires be identified as "BH1" and BH2 carrying sires as "BH2" as an extension of their name in the same way as other genetic defects are indicated;
- 3) that all AI centers only sell BH1 and BH2 negative young sires.

We were convinced at the time that using non-carrying sires was the simplest and most effective way to ensure that this specific gene would not be expressed in their offspring.

More specifically, when analysing the daughters of *R N R Payoff Brookings ET BH2* in the population since his first proof, he went from having 3% to 11.5% (December 2017 proof) daughters ranked among the top 400 GLPI cows. One of his sons and one of his daughters are currently #1 and #2 on the LPI list in Canada, while another of his sons is currently ranked #1 PPR, #3 NM\$, #1 Protein, #3 Milk, #4 Conformation in the U.S. There is a similar situation on the BH1 side with *Sun-Made Vigor TE BH1*. To determine the genetic impact of the complete removal of haplotype-carrying sires, we removed all *Vigor's* and *Brookings's* offspring from the list of available sires in Canada.

Tableau 4. Average proof of sires available in Canada

	#	LPI	Milk (kg)	F (kg)	P (kg)	%F	%P	Type	MS	F&L	DS	Rump	HL	SCS	DF
All	133	1686	704	34	30	+0.04	-0.01	7	6	4	4	4	104	2.94	100
Without offspring from Vigor and/or Brookings	32	1594	680	30	27	+0.01	-0.01	8	6	5	5	3	104	2.85	99
BH: 1%, 1%	75	1727	698	31	31	+0.01	+0.04	8	6	5	3	3	106	2.88	101
BH: 99%, 1%	14	1752	599	26	28	+0.00	+0.07	9	8	7	4	5	107	2.85	99
BH: 1%, 99%	12	1502	457	17	20	-0.04	+0.03	9	7	7	5	4	104	2.87	100

In this chart, we can see that the BH1 sires currently sold are above average for production and type. They also make up for 10% of the list. Individuals in the BH2 sire group are below average for production but above average for type.



Conclusions and areas for improvement

Conclusions drawn from these analyses enable us to make recommendations on possible improvements to all Brown Swiss farms.

Grade animals: We recommend the use of BH bulls: 1%, 1% for inter-breed matings F1/F2 (50%/75%) in order to avoid homozygous matings. Introducing genotyping starting with the 3rd generation.

Genotyping: Although genotyping is primarily used to the estimation of genomic evaluations, it is also the best genomic selection tool and it helps avoid at-risk matings (homozygotes). With regards to this study, this tool should be used at a minimum to test females with carrying parents (99%) or potential carriers of one of the haplotypes. Investing in genotyping costs less than any potential economic losses deriving from non-selective matings.

BH1 sires: Using above average BH1 sires seems to compensate the economic loss of embryonic mortality; they can therefore be used for AI. In a breeding program that does not use genotyping, it would be wise not to use BH1 sires for the second mating. As for the selection made by AI centres, these bulls should be in the 99th percentile of the breed.

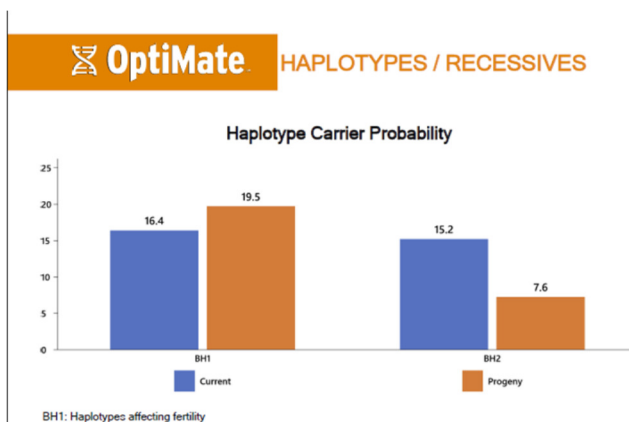
BH2 sires: While the use of BH2 sires seems more problematic given the economic impacts of homozygous matings. The haplotype has a 50% transmission rate to the progeny, it is therefore not recommended to eliminate a highly ranked heterozygous sire. Incorporating those sires in breeding programs must be done with genotyping, simply because they must be used only on BH2 females: (1% only). Even if AI centres only sell the 99th percentile, they should be aware that all breeders will not be using these sires.

This program enabled us to identify new cow families that will allow us to improve the productivity of our breed and to update the inventory of the Brown Swiss population in Quebec. In collaboration with CIAQ, breeders can now benefit from *Évolution ET* program (TE Evolution) as 40 females ranked in the 95th percentile are on a list of potential donors.

Prior to the program, the genotyping rate in Quebec was about 10%. It is now over 40%. Thanks to the greater number of genotyped animals and at the request of people in the industry, we have just learned that the lab fees will be lower.

This will have a positive impact on the number of sires marketed. In the past, some sires with high genetic potential were excluded from the testing program because they were BH2 carriers.

By validating the fact that the animal is carrier of one or both haplotypes, it will be easier to plan matings and avoid at-risk matings. The Association will focus more on extension than on removing animals from breeding programs. With their new OptiMate program, CIAQ allows breeders to instantly see the % of carrier animals in their herd and the outcome of future matings.



CLASSIFICATION

CLASSIFICATION SCHEDULE—OCTOBER

Early	Mid	Late
ON Niagara, Wentworth, Brant, Hal-dimand-Norfolk, Prescott	ON Russell, Carleton [MR] Grey	ON [MR] Leeds & Grenville, Lanark & Renfrew
QC Compton, Stanstead [MR] Riviere Du Loup & Temiscouata, Rimouski & Matane,	QC Frontenac [MR] Drummond	QC Beauce, Dorchester
Matapedia & Bonaventure, Arthabaska & Megantic, Arthabaska & Wolfe, Lotbiniere, Nicolet, Yamaska	BC [MR] Lower & Central Fraser, Okanagan, Agassiz, Abbotsford, Chilliwack, Vancouver	

CLASSIFICATION SCHEDULE—NOVEMBER

Early	Mid	Late
Classifier Conference November 5-9	ON [MR] Leeds & Granville, Grey, Bruce, Huron, Halton & York & Peel, Simcoe & Dufferin QC Dorchester	AB Leduc, Gibbons, Wetaskin, Peace River QC Steinbach-Rainy River (ON), Grunthal, St. Claude, Brandon, Winnipeg North
	AB Brooks, Lethbridge, Calgary, Red Deer	



BREED IMPROVEMENT

NATIONAL HERD AVERAGE

	#	MILK	FAT		PROTEIN	
	of records	kg	kg	%	kg	%
2017	1815	8794	369	4.20	367	3.66
2016	1798	8742	363	4.16	306	3.50
2015	1763	8796	355	4.19	296	3.49
2014	1731	8401	351	4.20	293	3.49
2013	1796	8465	351	4.17	296	3.51
2012	1883	8258	340	4.14	289	3.51
2011	1978	8260	340	4.13	288	3.50
2010	1933	8340	338	4.07	288	3.47
2009	1974	8127	329	4.08	282	3.48
2008	1661	8366	337	4.04	290	3.48
2007	1545	8159	330	4.06	283	3.48

	BCA		
	Milk	Fat	Protein
2017	227	237	227
2016	226	233	226
2015	222	230	211
2014	218	227	217
2013	219	226	218
2012	213	218	213
2011	214	219	213
2010	215	217	213
2009	211	213	209
2008	217	217	215
2007	211	212	209

CLASSIFICATION SCORES

	Excellent		Very Good		Good Plus		Good		Fair		Total
2017	118	9%	402	31%	625	49%	135	11%	2	0%	1282
2016	120	10%	383	31%	546	45%	173	14%	4	0%	1226
2015	111	9%	379	29%	592	45%	211	16%	11	1%	1304
2014	99	8%	375	29%	617	47%	204	16%	12	1%	1307
2013	90	7%	387	30%	590	46%	215	17%	9	1%	1291
2012	79	6%	336	27%	579	46%	265	21%	8	1%	1267
2011	84	6%	329	25%	640	49%	247	19%	8	1%	1308
2010	79	6%	329	24%	654	48%	297	22%	15	1%	1374
2009	86	7%	270	21%	616	47%	305	23%	33	3%	1310
2008	57	5%	263	21%	594	48%	297	24%	21	2%	1232
2007	49	4%	230	21%	515	46%	290	26%	27	2%	1111

2018 EXCELLENTS

January to August

Registration #	Animal Name	Lact.	Score	Owner	Prov.
BSCANF11869630	GUBELMAN ANIBAL LACY	3	93	GUBELMANN BROWN SWISS LTD.	ON
BSCANF106794826	GRANMONT POWERPLAY LEGALITE	7	92	FERME DOMAINE DE LA RIVIERE INC	QC
BSCANF107363031	BROWN HEAVEN THUNDER BETSY	4	92	FERME BROWN HEAVEN	QC
BSCANF108880632	BROWN HEAVEN FABULOUS TIMBITS	3	92	FERME BROWN HEAVEN	QC
BSCANF10926945	EDENCREST SUPREME ROWENA ET	5	91	FERME SIKI	QC
BSCANF9907834	CRISIDE CARTOON CARRIANN	6	91	CRISIDE FARMS	MB
BSCANF11141368	CRISIDE CARTOON SKY	4	91	CRISIDE FARMS	MB
BSCANF11148606	BRADNER TOTALLY TATTI	4	91	BRADNER R FARMS LTD	BC
BSCANF109336749	CHARLUSON C-PEPPER SPICE	4	91	FERME CHARLUSON INC	QC
BSCANF11128397	GUBELMAN VIGOR DIAMOND II	3	91	JOLLY FARMER PRODUCTS, INC.	NB
BSCANF11522589	GUBELMAN VIGOR JULIANAH ET	3	91	BRADNER R FARMS LTD	BC
BSCANF11282426	SIGEL CAFINO MUKI	4	91	MICHAEL & CORDULA INAUEN	ON
BSCANF107882248	MILEC DALLY MAGGIE	4	91	FERME MCF LECLERC INC.	QC
BSCANF107961619	SHADY LANE SWISS BRKNGS ALPHA	3	91	SHADY LANE SWISS SENC	QC
BSCANF11572874	EDENCREST PEPPER RAHAB	3	91	JOLLY FARMER PRODUCTS, INC.	NB
BSCANF11625295	GUBELMAN ETLAR PIPER	3	91	GUBELMANN BROWN SWISS LTD.	ON
BSCANF107363035	BROWN HEAVEN JET SPEEDY DALLY	3	91	FERME BROWN HEAVEN	QC
BSCANF11625310	GUBELMAN BROOKINGS DESSA	3	91	GOLDEN GATE FARMS LTD	BC
BSCANF11911211	BATESDALE THUNDER VERA	3	91	FERME CHARLUSON INC	QC
BSCANF107363038	BROWN HEAVEN KINGPIN TWITIE	3	91	FERME BROWN HEAVEN	QC
BSCANF9609159	BULL ACRES PROGR ZEUS KATHLEEN	8	90	BULL ACRES FARM	ON
BSCANF110437326	ST YVES PAMELA MILLENIUM	6	90	ALAIN ET ROGER PREFONTAINE	QC
BSCANF9956963	SWISS DREAM EROS CASSIE	4	90	SWISS DREAM FARM	MB
BSCANF106277061	PAUFERLOU SHEBANG YAYA	5	90	MARC-ANTOINE ROUSSEAU	QC
BSCANF11141391	CRISIDE PRINCE RAVEN	4	90	CRISIDE FARMS	MB
BSCANF107119743	PICHET AMARETTO LADY GAGA	5	90	FERME F.X. PICHET INC.	QC
BSCANF11522526	BRADNER W TWEETEN KB ET	3	90	BRADNER FARMS	BC
BSCANF107950335	HINSY AMARETTO KOCKTAIL	4	90	SYLVAIN HINSE	QC
BSCANF106959038	CARBONO AMARETTO LATTÉ	3	90	FERME CARBONNEAU	QC
BSCANF11625267	GUBELMAN DALLY BESSY	4	90	JOLLY FARMER PRODUCTS, INC.	NB
BSCANF11592767	NOR BELLA JETWAY SAPPHIRE	3	90	NOR BELLA ACRES INC.	ON
BSCANF11592771	NOR BELLA PAUL DEP	3	90	NOR BELLA ACRES INC.	ON
BSCANF11700671	CLEARCREST VIGOR DEBRA	4	90	SPRUCETONE HOLSTEINS	ON
BSCANF11621280	CRISIDE SONNY HORIZON	3	90	CRISIDE FARMS	MB
BSCANF107363037	BROWN HEAVEN J FANCY ET	3	90	FERME BROWN HEAVEN	QC

2018 EXCELLENTS January to August

Registration #	Animal Name	Lact.	Score	Owner	Prov.
BSCANF12015853	NOR BELLA PAUL ELIZABETH	3	90	NOR BELLA ACRES INC.	ON
BSCANF107961664	SHADY LANE SWISS T ALLOUETTE	3	90	SHADY LANE SWISS SENC	QC
BSCANF108681142	SCHWEIZER MOJO KITTY	3	90	LA FERME HANS ENR.	QC
BSCANF107363039	BROWN HEAVEN BONANZA CHIQUITA	3	90	FERME BROWN HEAVEN	QC
BSCANF11869622	GUBELMAN JAGUAR WOLGA	3	90	GUBELMANN BROWN SWISS LTD.	ON
BSCANF108217130	MILEC DALLY BAILA	3	90	FERME MCF LECLERC INC.	QC
BSCANF11869625	GUBELMAN DIRECT JOEY	3	90	GUBELMANN BROWN SWISS LTD.	ON
BSCANF108217131	DOLI BROWN TWILIGHT ZOE	3	90	SYLVAIN BOULANGER & CHRISTINE DULAC	QC
BSCANF11869629	GUBELMAN HURAY DELINDA	3	90	GUBELMANN BROWN SWISS LTD.	ON
BSCANF11869634	GUBELMAN ZEPHIR DYNAMITE	3	90	GUBELMANN BROWN SWISS LTD.	ON

2018 VERY GOOD January to August

Registration #	Animal Name	Score	Owner	Prov.
First lactation - Born in 2016				
BSUSAF68180019	BLESSING MORT OSBORN R GINA	88	FRED MATHYS & DONNA HARP	MB
BSCANF12299626	GUBELMAN DAVENPORT CHLOE	87	GUBELMANN BROWN SWISS LTD.	ON
BSCANF109621988	BROWN HEAVEN T FROOTLOOPS	87	FERME BROWN HEAVEN	QC
BSCANF12299624	GUBELMAN ANIBAL MACEY	86	GUBELMANN BROWN SWISS LTD.	ON
BSCANF12335229	BATESDALE JONGLEUR RAISIN	86	WALKERBRAE FARMS	ON
BSCANF109621987	BROWN HEAVEN GLENN FROSTY	86	FERME BROWN HEAVEN	QC
BSCANF109970413	RENCIE DURHAM PIRAM	86	FERME RENCIE INC.	QC
BSCANF12299638	GUBELMAN BIVER MOLLY	86	GUBELMANN BROWN SWISS LTD.	ON
BSCANF12367499	SWISS KINE BROOKINGS ORIENT	85	SIGHT HILL FARM LTD	MB
BSCANF109621984	BROWN HEAVEN T JEAVERISSA	85	FERME BROWN HEAVEN	QC
BSCANF11903183	SPRING ROSE JAKE KALE	85	STEPHEN HENHOEFFER	ON
BSCANF12275292	NOR BELLA CARTER PLINKO	85	NOR BELLA ACRES INC.	ON
BSCANF109736129	SHADY LANE SWISS CRTL ALEYOOP	85	SHADY LANE SWISS SENC	QC
BSCANF12497081	CRISIDE LEBRON TITANIUM	85	CRISIDE FARMS	MB
BSCANF12299631	GUBELMAN DOMINIC BROOKE	85	GUBELMANN BROWN SWISS LTD.	ON
BSCANF109847438	MILEC FANTASTIC PALMA	85	FERME MCF LECLERC INC.	QC
BSCANF12299633	GUBELMAN KANNON DYNASTY	85	GUBELMANN BROWN SWISS LTD.	ON
BSCANF110076033	SCHWEIZER CARL NESA	85	LA FERME HANS ENR.	QC
BSCANF109970420	RENCIE RICHARD SWISSTAR	85	FERME RENCIE INC.	QC
BSCANF12299642	GUBELMAN BIVER DOMINIC	85	GUBELMANN BROWN SWISS LTD.	ON

2018 VERY GOOD January to August

Registration #	Animal Name	Score	Owner	Prov.
First lactations - Born in 2015				
BSCANF108880643	BROWN HEAVEN BLOOMING BUNNY ET	88	FERME BROWN HEAVEN	QC
BSCANF108880651	BROWN HEAVEN BIVER FAY	87	FERME BROWN HEAVEN	QC
BSCANF12115960	DUN ROVIN CARTER CINDER	87	C MARK MCCONNELL	ON
BSCANF12177835	ELOC BIVER RENNIE	87	PIERRE BOULET	QC
BSCANF12177836	ELOC BIVER KUNO	87	A. DEAN COLE	NS
BSCANF12275275	NOR BELLA WHISKEY DIANA	86	NOR BELLA ACRES INC.	ON
BSCANF108880646	BROWN HEAVEN GLENN FANTASIA ET	86	FERME BROWN HEAVEN	QC
BSCANF12275279	NOR BELLA JONGLEUR NADINE	86	NOR BELLA ACRES INC.	ON
BSCANF12176382	SWISS KINE BROOKINGS OMEGA	86	BRADNER FARMS	BC
BSCANF12274619	BARTSTAR MANCHESTER SATIN	86	DAVID & MELISSA LAWRENCE	ON
BSCANF109246598	ISIDORE FANTASTIC BRUNA	86	FERME LEHMANN	QC
BSCANF109621990	BROWN HEAVEN FAB LUCKYLUKE	86	MUSQUIE VALLEY FARM LTD	NS
BSCANF12159216	CLEARCREST MPOWVERED NEXIS	86	SPRUCETONE HOLSTEINS	ON
BSCANF12115971	DUN ROVIN CARTER CAYLEY	86	C MARK MCCONNELL	ON
BSCANF109847424	MILEC TWILIGHT BIANCA	86	FERME MCF LECLERC INC.	QC
BSCANF109621993	BROWN HEAVEN BIVER SNODALLY ET	86	FERME BROWN HEAVEN	QC
BSCANF12226578	FOUR OAK RICHARD LANT	86	FOUR OAK FARMS	MB
BSCANF108554857	PAUFERLOU DEEGAN SANSa	86	PAUFERLOU INC	QC
BSCANF109318992	BERTNOR XÉNOM CANON	85	FERME ZIMO S.E.N.C.	QC
BSCANF12237876	ANFIELD TOKYO GLORIA	85	SWISS DREAM FARM	QC
BSCANF109246592	ISIDORE FABULOUS JELIA	85	FERME LEHMANN	QC
BSCANF109110853	MILKSHAKE FANTASTIC SKRILEX ET	85	ANTONIN MARCOUX	QC
BSCANF12275277	NOR BELLA PATCH STAR	85	NOR BELLA ACRES INC.	ON
BSCANF12115951	DUN ROVIN WHISKEY LATTE LEENA	85	HIGH BEAM BROWN SWISS	ON
BSCANF11518754	JOLLY BROOKINGS UNANIMOUS	85	JOLLY FARMER PRODUCTS, INC.	NB
BSCANF12275281	NOR BELLA SEAMAN SULLY	85	NOR BELLA ACRES INC.	ON
BSCANF12121705	SHOWCASE BOSEPHUS SKYE	85	NATIONAL MUSEUM OF SCIENCE & TECHNOLOGY CORP	ON
BSCANF11719528	SIGVIEW FALCON DALLY	85	BRADNER FARMS	BC
BSCANF11869667	GUBELMAN JOSCHKA DEVA	85	BRADNER FARMS	BC
BSCANF12159201	CLEARCREST SEASIDEBLOOM TAYA	85	SPRUCETONE HOLSTEINS	ON
BSCANF12024092	CRISIDE HARTNEY CHRISTINA	85	BRADNER FARMS	BC
BSCANF12188539	BARTSTAR MANCHESTER PROSPECT	85	DAVID & MELISSA LAWRENCE	ON
BSCANF12159205	CLEARCREST SEASIDEBLOOM BETTY	85	SPRUCETONE HOLSTEINS	ON
BSCANF109690949	RENCIE DURHAM TERRIRAM	85	FERME RENCIE INC.	QC

2018 VERY GOOD January to August

Registration #	Animal Name	Score	Owner	Prov.
First lactation - Born in 2015 (continued)				
BSCANF12191037	BRADNER R AQUILLINI MS GRANNY	85	BRADNER R FARMS LTD	BC
BSCANF109225841	OAKLEY	85	FERME JÉLIKA	QC
BSCANF109618726	BLYVIAN DALLY MAYA	85	PAUFERLOU INC	QC
BSCANF109621992	BROWN HEAVEN TERROR FIESTA	85	FERME BROWN HEAVEN	QC
BSCANF109373787	LENTREROCHÉ FABIOLA RICHARD ET	85	FERME VANNOD ET ASSOCIES ENRG	QC
BSCANF109763134	GOULAISE GOLDMINE ALBANIE	85	FERME GOULAISE INC.	QC
BSCANF109847422	MILEC BIVER BEATLE ET	85	JEAN-CLAUDE LAFORTUNE & BRUNO OUMET	QC
BSCANF109847423	MILEC TWILIGHT ANDREA ET	85	SYLVAIN BOULANGER & CHRISTINE DULAC	QC
BSCANF11719541	SIGVIEW PINOT FEUERSTEIN	85	SIGVIEW FARMS	ON
BSCANF12226571	FOUR OAK GPS TWIGGY	85	FOUR OAK FARMS	ON
BSCANF12635785	NOR BELLA DALLY SHILOH	85	NOR BELLA ACRES INC.	ON
BSUSAF68174663	R N R KINGSMAN KARLIE	85	JOHN DORTMANS JR.	ON
BSCANF12340682	DIVINE JONGLEUR CINDY LOU	85	IAN & CARYL LENNOX	BC
BSCANF109847425	MILEC FANTASTIC BIDULE	85	FERME MCF LECLERC INC.	QC
BSCANF108845213	ST YVES OKAKIKA MANCHESTER	85	ALAIN ET ROGER PREFONTAINE	QC

Are you passionate about the dairy industry? Holstein Canada has an opening for a Classifier in Quebec! We're looking for enthusiastic candidates who enjoy life on the road and have the dairy knowledge to succeed. Come join the team that's helping thousands of farmers across Canada keep their herds healthy and happy!

Visit www.holstein.ca



SHOW REPORTS

EXPO DE VICTORIAVILLE 2018 (160TH EDITION)

Judge: Mr. Andrew Shufelt

Date: July 14, 2018

Location: Victoriaville, Québec



Junior Champion	Schaerli Bebette Carrier	Ferme Beavair 2000, Sylvain Boulanger & Christine Dulac
Reserve Jr Champion	Goulaise Falk Evenka	Ariane Maltais
HM Junior Champion	Rencie BigStar Jay Poppy	Ferme Rencie
Grand Champion	Rencie Shebang Terribang	Ferme Rencie
Reserve Gr. Champ.	Rencie Richard Swisstar	Ferme Rencie
HM Grand Champion	Rencie Duraham Terriram	Ferme Rencie
Premier Breeder and Exhibitor	Ferme Rencie	



SHOW REPORTS

HANOVER FAIR BROWN SWISS SHOW 2018 (10TH EDITION)

Judge: Mr. Ken Empey

Date: August 11, 2018

Location Hanover, Ontario

Junior Champion	Nor Bella Supreme Perfect	Nor Bella Acres
Reserve Jr Champion	Nor Bella Emory Portia	Nor Bella Acres
HM Junior Champion	Nor Bella Biver Doritos	Nor Bella Acres
Grand Champion	Brown Heaven Mandel Jeaver	Andrew DenHaan
Reserve Gr. Champ.	Nor Bella Whiskey Paula	Nor Bella Acres
HM Grand Champion	Nor Bella Amaretto Sweet	Nor Bella Acres
Premier Breeder and Exhibitor	Nor Bella Acres	



SHOW REPORTS

SUPREME DAIRY SHOW 2018

Judge: Mr. Richard Landry
Date: August 23, 2018
Location: Saint-Hyacinthe, Québec



Junior Champion	Brown Heaven Carter Tutti	Matthew Pacheco
Reserve Jr Champion	Brown Heaven C Burberry	Brown Heaven
HM Junior Champion	Schaerli Bebette Carrier	Ferme Beauvair, S. Boulanger & Christine Dulac
Grand Champion	Iroquois Acres Jong Cali	Matthew Pacheco
Reserve Gr. Champ.	Eloc Biver Rennie	Pierre Boulet
HM Grand Champion	Brown Heaven Thunder Betsy	Brown Heaven
Premier Breeder and Exhibitor	Brown Heaven	

CLASS RESULTS

Junior Calf

- | | |
|----------------------------------|--------------------|
| 1. Brown Heaven Bigstar Florence | Fred Mathys |
| 2. Belbrune Biver Tartine | Emmanuelle Vincent |
| 3. Rencie Big Star Jay Poppy | Keven Dumas |

Intermediate Calf

- | | |
|-------------------------------|--|
| 1. Schaerli Bebette Carrier | Ferme Beauvair, S. Boulanger & Christine Dulac |
| 2. Brown Heaven Fara Seaman | Ferme Vannod & Associates |
| 3. Schweizer Assay Pouffa | Hans Schweizer |
| 4. Brown Heaven CAD Twilight | Brown Heaven |
| 5. Brown Heaven N Smily Dally | Brown Heaven |
| 6. Rencie Jubltion TB Jujube | Keven Dumas |

Senior Calf

- | | |
|------------------------------|-----------------|
| 1. Schweizer Dynamite Chanel | Hans Schweizer |
| 2. Rencie Carter Citycar | Keven Dumas |
| 3. Milec Falco Girl | Chantal Leclerc |

SHOW REPORTS

SUPREME DAIRY SHOW 2018

CLASS RESULTS CONT'D

Junior Yearling

1. Brown Heaven C Burberry
2. Milec Tequila Corinne
3. Rencie Tokyo Suiskyo

Brown Heaven
Chantal Leclerc
Keven Dumas

Junior Breeders Herd

1. Brown Heaven
2. Ferme Rencie

Premier Exhibitor & Breeder

Brown Heaven



Junior 2 Year Old

1. (BU) Cutting Edge B Kandy
2. Brown Heaven GBoy Bubblegum
3. Brown Heaven Glenn Frosty
4. Brown Heaven T Frootloops
5. Milec Fantastic Palma

Kevin Jacobs
Brown Heaven
Brown Heaven
Brown Heaven
Chantal Leclerc



Senior 2 Year Old

1. (BU) Eloc Biver Rennie
2. Brown Heaven Terror Fiesta

Pierre Boulet
Marc-Antoine Cote

Junior 3 Year Old

1. Iroquois Acres Jong Cali
2. Brown Heaven Biver Fay
3. Brown Heaven Glenn Fanny

Matthew Pacheco
Brown Heaven
Brown Heaven

Four Year Old

1. Milec Dally Baila

Chantal Leclerc

5-Year Old

1. Brown Heaven Thunder Betsy

Brown Heaven

Progeny of Dam

Brown Heaven

Breeder Herd

Brown Heaven



BROWN SWISS BULLS — GENOMICS

AUGUST 2018 BROWN SWISS EVALUATIONS

Newly Proven by LPI				Top 5 LPI				with Biggest LPI Change			
Nouvellement éprouvés selon IPV				5 Meilleurs selon l'IPV				Avec changement d'IPV important			
2	HURAY	HUSSLI	2111	1	SEASIDEBLOOM	+	2379	SEASIDEBLOOM	+221	2379	
20	BIVER	BLOOMING	1452	2	HURAY	N	2111	ZEPHIR	-142	1426	
33	DAVENPORT	CARTER	1369	3	PAYSSLI	+	1862	CADENCE	-133	1701	
46	GPS	SUPREME	1230	4	BUSH	-	1818	DURHAM	+125	1436	
				5	MOJO	+	1801	CARTER	-111	1374	
Sire of Top 25 LPI Bulls (Average LPI)				Milk (kg)				Fat (kg)			
Pères des 25 meilleurs (Moyenne IPV)				Lait (kg)				Gras (kg)			
BROOKINGS		20%	1786	1	SEASIDEBLOOM	+	1895	1	SEASIDEBLOOM	+	62
ZEUS		16%	1582	2	HURAY	-	1570	2	HURAY	-	59
VIGOR		12%	1662	3	CARTEL	N	1287	3	CAFINO	+	47
PAYOFF		8%	1780	4	ALTARANSOM	+	1230	4	BOSEPHUS	+	39
WONDERMENT		8%	1474	5	DAZZLER	+	1206	5	MOJO	-	38
Protein (kg)				Conformation				Conformation			
Protéine (kg)				Conformation				Conformation			
1	SEASIDEBLOOM	+	60	1	TWILIGHT	0	13	T-5	THUNDER	-	10
2	HURAY	1	57	2	SUPREME	+	12	T-5	FANTASTIC	0	10
3	DAZZLER	+	45	3	SEAMAN	+	12	T-5	AMARETTO	0	10
4	CAFINO	+	39	4	GLENN	0	11				
5	CARTEL	N	36	T-5	CADENCE	-	10				

These following two pages of statistics are courtesy of



BROWN SWISS COWS — GENOMICS

AUGUST 2018 BROWN SWISS EVALUATIONS

Top 5 GLPI

5 Meilleures selon l'IPVG

1	GUBELMAN SSB DEVON P	+	2192
2	GUBELMAN JUHUS CRYSTAL	+	2081
3	NOR BELLA PAUL EVE	+	2066
4	GUBELMAN DRIVER BELLE	+	2056
5	CHARLUSON CADENCE DALIDA	N	2024

Dams of Top 400 GLPI Cows

Mères des 400 meilleures selon l'IPVG

	MILEC ZEUS BEAUTY ET	8
	PAUFERLOU WURL STORA	7
	SWISS DREAM AGENDA FAITH ET	7
	BROWN HEAVEN J BUTTERFLY	5
	ELM PARK COGNAC 'N' AMARETO	4

Milk / Lait (kg)

1	SHADY LANE SWISS JH PATIENCE	N	1778
2	GUBELMAN SSB DEVON P	+	1600
3	REDAM SEASIDE GARGAMELLE	+	1590
4	CHARLUSON CADENCE DALIDA	N	1427
5	SIMMABEC RANSOM BANNIERE	-	1416

Protein / Protéine (kg)

1	GUBELMAN SSB DEVON	+	65
2	KOOPYCREST HURAY BELLA P ET	0	58
3	CHARLUSON CADENCE DALIDA	N	55
4	GUBELMAN JUHUS DAZZEL	+	54
T-5	GUBELMAN DRIVER BELLE	0	53
T-5	SHADY LANE SWISS JH PATIENCE	N	53

Sires of Top 400 GLPI Cows

Pères des 400 meilleures selon l'IPVG

	BROOKINGS	10.25%	1480
	SEASIDEBLOOM	4.50%	1727
	PAYSSLI	4.25%	1466
	VIGOR	4.25%	1318

New Top GLPI

Meilleures nouvelles selon l'IPVG

1	CHARLUSON CADENCE DALIDA	2024
2	SHADY LANE SWISS JH PATIENCE	2006
3	SHADY LANE SWISS SSB SIZZLE	1904
4	MILEC TWILIGHT BIANCA	1886
5	GUBELMAN DAVENPORT CHLOE	1777

Fat / Gras (kg)

1	NOR BELLA PAUL EVE	+	76
2	SIGVIEW VASA BACARDI	0	66
3	GUBELMAN JUHUS CRYSTAL	+	64
4	CHARLUSON CADENCE DALIDA	N	57
5	GUBELMAN VANPARI DOROTHY	-	56

Conformation

T-1	SHADY LANE SWISS SUP ALLRIGHT	+	15
T-1	SHADY LANE SWISS T ALLOUETTE	0	15
T-1	BROWN HEAVEN GLENN FANTASY	-	15
T-1	BROWN HEAVEN VICTOR FINEST	N	15
T-5	NOR BELLA PAUL EVE	-	14
T-5	REDAM TWILIGHT CADNAS	0	14
T-5	MILEC SEAMAN BRETZEL	+	14
T-5	BROWN HEAVEN J FANCY ET	0	14
T-5	BROWN HEAVEN LEBRON FAITH ET	-	14

CDN—YOUR DAIRY NETWORK

AVAILABLE REPORTS ON CDN.CA

To save on printing and paper - I did not include copies of the CDN reports. However, I did include a list of available reports on the CDN website. Further below are instructions on how to find those reports. Happy reading.
Donald Caron

Bulls—Domestic	Bulls—Foreign	Various Reports
Top LPI	Top MACE LPI	Top Herds by LPI
Top Pro\$	Top MACE Pro\$	Top Herd by Pro\$
Top EBV Milk	Top MACE Actively Marketed	Benchmark Averages
Top EBV Fat		Percentile Rank Tables
Top EBV Protein		
Top EBV Conformation		
	Bulls—Young Sires	
	Top GPA LPI Released in Canada	MACE Conversion Equations
	Top GPA Pro\$ Released in Canada	Base Change Summary
		LPI Formula
		Genetic Trend Information
		National Genetic Trend Tables
		National Genetic Trend Plots
		Provincial Genetic Trend Tables
		National Phenotypic Trend Tables
		Provincial Phenotypic Trend Tables
Cows	Heifers	
Top LPI	Top Heifers by PA	
Top Pro\$	— 9 months & older	
Top EBV Milk	Top Pro\$	
Top EBV Fat	— 9 months & older	
Top EBV Protein	Top Calves by PA LPI	
Top EBV Conformation	— 9 months & older	
Top Cow Candidates for Genotyping by LPI (under 42 months)	Top Pro\$	
	— under 9 months	
	Top Heifer Candidates for Genotyping by PA LPI	

1. Go to www.cdn.ca
2. Select your language preference under the CDN logo (not global)
3. Click on genetic evaluation located in the left hand side bar.
4. Click on 'General' to get access to all the different reports.



The reports are separated by breeds— be sure to use the BS column.
All reports are in pdf format.



ANIMAL QUERY ON CDN.CA

Also available on CDN is the Animal Query function. Here are some instructions on how to access that tool.

1. Go to www.cdn.ca
2. Select your language preference under the CDN logo (not global)
3. Click on Animal Query located in the left hand side bar.
4. Click on 'Individual' to get access to the search screen



From here, you must pick one way to search for your animal; either by:

- Registration number
- Name
- Animal Tattoo
- Semen Code

The screenshot displays the 'Animal Query' page on the Canadian Dairy Network website. The interface includes a sidebar with various tools and a main search area. The search area is divided into four sections, each with its own set of input fields and dropdown menus. A black arrow points from the 'Registration number' bullet point in the list to the 'Search by Registration Number' section. The page also includes a 'Sign In' box, a 'Reset to Default Settings' button, and a footer with copyright information.

For each search type, make sure you select the correct information in the drop down boxes. (Look for those small arrows pointing down)

If you need help, feel free to call me. Donald Caron

SWISSGENETICS BREEDING VALUE HIGHLIGHTS

AUGUST 2018 - BROWN SWISS

Generally, there is not many new information's coming back from the farms for the genetic proof between April and August. Indeed many of the new heifers are starting to calve at the end of the summer season. For this reason, we had a reasonable proof run with two very good bulls for the Brown Swiss Breed.

NEW RELEASES:



Gasis Blooming PRINZ (Blooming x Wagor x Texas): He is the new BLOOMING son with incredible numbers for components (+0.13% Fat and +0.30% Protein). This bull is showing a very functional type profile, a great index for SCE (108) and he is BB for k-casein and A2A2 for beta casein.

Pleisch's Nelgor NELLO (Nelgor x Vigor x Ponente): The First son of our top proven bull NELGOR is called NELLO. This bull combines great indexes for production (+847 milk kg) with top indexes for all traits of udder composite. The quality of udder has been the most important point of his family, dam and grandma are EX cows with 92

and 94 points for udder! NELLO is BB for k-casein and A2A2 for beta casein.

PROVEN SIRES:

Egochs Dally SIMBABOY (Dally x Vigor x Poldi): This bull leads by far the ranking for Total Index with 1447 points! Components, SCS, daughter fertility index and type functionality are his most strong points: these make him the number one on the list. He is BB for k-casein and A2A2 for beta casein.

Gantenbein's Blooming ALASKO (Blooming x Eros x Denmark): ALASKO is the BLOOMING son which had the most success during the show. In addition, he is a complete bull for all other traits. In one package, you have: production, longevity and show type! K-casein BB and beta-casein A2A2 are completing his profile.

PASSAT (Payssli x Glenn x Peter): PASSAT with his second proof as a proven sire with more daughters on his proof continues to be a top bull for milk Kg and udder index. Now he is the second best bull for that important trait.

Scherma Blooming BIVER (Blooming x Nesta x Moiado): With more than 800 daughters on the proof of August 2018, BIVER has improved all his indexes: Kilo milk, components, SCS and persistency are going up one more time! In addition, he has the BB K-casein and A2A2 beta-casein.

XDober's Umberto UDORO (Umberto x Glenn x Pat): He is the right choice in order to improve production, Fat% and SCS at the same time, without losing the daughter fertility and conformations traits! K-casein BB and beta-casein A2A2 are completing his profile.

ANIBAL, BLOOMING and SALOMON The three bulls with 1'000 or more daughters. Thus, this confirm that they have been the right choice of the last 5 years! At the same time, these three bulls are on the top of the list. They can be ordered right now too. BLOOMING and SALOMON are BB for k-casein and A2/A2 for beta-casein.



OPTIMIS (GENOMIC BULLS):

NEW RELEASES

BAYS (Arrow x Nesta x Moiado): BAYS is the maternal brother of BIVER, but with a different genomic profile, BAYS is a great bull for all production traits and for all fitness traits. Sire of sons with the BB for k-casein and A2A2 for beta casein.

SASCHA (Narcotic x Vigor x Tau): He is another sire of sons with a high international demand. He is the best NARCOTIC son and he shows top genomic numbers for kg Milk and udder composite. The k-casein BB and the A2A2 for beta casein complete his nice profile.

GLENWOOD (Calvin x Glenn x Raymondo): the only CALVIN son of Glenn GLENA available worldwide!! As his dam this bull could be one of the future top bulls for show type. His genomic numbers are a great start to reach this goal!

LENNOX (Biver x Calvin x Glenn): The first calves are born during the last three months and now LENNOX is one of the most used bull in Switzerland. Right now he is the best BIVER son for GZW of our genetic program.

VICTOR P (Viking P x Glenn x Vigor): The best polled bull out of the most popular Swiss cow family. VICTOR's dam is a GLENN daughter out of the family of Starbuck JOLA, the dam of our top bull JONGLEUR! With VICTOR we finally have a complete polled bull: pedigree, genomic indexes and deep cow family!



SWISSGENETICS BREEDING VALUE HIGHLIGHTS

AUGUST 2018 - BRAUNVIEH

OPTIMIS SIRE WITH FIRST DAUGHTERS IN CALF:

ROY (Edual x Vento x Zauber): with this bull we are ready to have the right substitute of ORELIO. His first daughters are improving a lot his genetic profile and now he is a complete bull, the right choice to improve important traits like milk Kg, protein, SCS, lactation persistency, all type traits and the beef traits in one generation.

PROVEN SIRES:

ROMOLO (Rino x Rico x Olino) this bull is a big specialist for components, type and mammary system, ROMOLO has top deviations for Fat % and Protein %. He is AB for k-casein and his pedigree is deep and includes lot of cows with an incredible longevity.



ORELIO (Winzer x Voeris x Leo) Run after run ORELIO has increased his top genomic indexes and he continues to be the best proven bull of the OB breed by far. At the moment we have only one problem, he is selling a lot of doses, take your chance before he is sold out. He is BB for k-casein!

VERO U-BACH (Lukas x Diamant x Merlo): This bull completes perfectly our OB portfolio. He is the right bull to improve components and longevity, at the same he is confirming his leadership for type and udder composite. He is A2A2 for beta casein.

OPTIMIS (GENOMICS):

ARCAS (Lordan x Hecht x Gral): The sire of this bull is LORDAN, which is one of the best genomic bull of the last three years. Therefore, ARCAS is one of the most complete young bulls. No doubt that ARCAS will be the star of this breed during the next months and may be years!

VAJAO (Runzli x William x Waldo): With this bull we can add to our portfolio an all-round bull with very good indexes for milk Kg and SCS, at the same time he is BB for K-casein and A2A2 for beta casein.

MINISTER (Valido x Hecker x Vento): He is another son of VALIDO with a different genomic profile. Minister is an extreme bull for the OB breed: he is the only one bull available with an index for Milk Kg over +1400. At the same time he is very good for the type functional traits and he is positive for all beef traits!! He is A2A2 for beta casein.

All these three bulls are available with sexed semen!!

SWISSGENETICS ONLINE CATALOG

How to select your bulls and create your catalogue

On the bulls list click
"Detail filter"

Choose labels and criteria.

The bulls applying to all
criteria appear on the list,
the highest on Total Merit
Index on top.

On the left side click on the
bulls you want to select,
and then on
"Use the selection".
There choose
"To the catalogue"

Sort the bulls in the order
you prefer and then click on
"Create a catalogue"

Choose a cover for your
catalogue, a title for it, a
name for the file and the
resolution ("High resolution
is" recommended). Click on
"Create a catalogue"
and a PDF will be generated

Number of products: 141

Mark all: ☐ Display the selection: ☐ Use the selection: ☐

Optimizing (1) ☐ Pregnancy Index (1) ☐ Selection X (1) ☐

Optimizing (1) ☐ Pregnancy Index (1) ☐ Selection X (1) ☐

Labels: ☐ Delta Kewin A2 (1) ☐ Delta Kewin B2 (1) ☐ Delta Kewin B3 (1) ☐

Milk kg:

JESSIE'S FAREWELL

Hello Everyone,

I was asked if I would like to have a message in the August newsletter and I am taking this opportunity to say a few words. Firstly, I want to say thank you to the membership and board of directors for welcoming me so graciously into your Association family. It has truly been an honour and a privilege to work with the board and members of the Canadian Brown Swiss & Braunvieh Association for the past 18 years. I have had so many wonderful opportunities over the years and have made many life-long friendships.

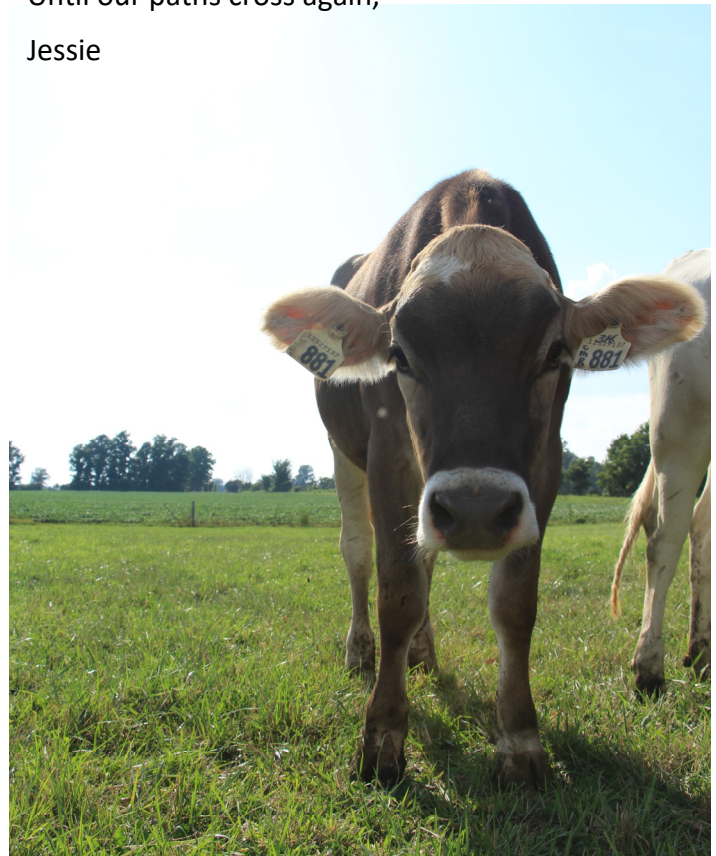
I am grateful to Anne Louise and her team at Holstein Canada for submitting a proposal to the board to administer the duties of the association and pleased the board accepted. I have worked with Linda Markle, Donald Caron and Annie Cote for several years and I know they will take care of the needs of the association. It made for an easier transition for me, knowing there are great people willing to assist the members. I am confident the association is on the right path and I wish the breed only the best as you work together on this journey.

I look forward to my new responsibilities here at EastGen and to the opportunities that lie ahead. I would be remiss if I didn't thank the wonderful Presidents I have had the great fortune to work with (Markus Mueller, Mark McConnell, Ernst Gubelmann, Renald Dumas and Ken Drummond). These men have given a tremendous amount of time, money and energy in support of the breed. Please continue to support your national board and your President as they make decisions for the betterment of the breed.

To each of you, may health & happiness be with your family and great success with your herd.

Until our paths cross again,

Jessie



Sad that you're leaving...

MESSAGE FROM THE SECRETARY MANAGER

BIG SHOES TO FILL

Holstein Canada is honored and appreciative that your Board of Directors agreed to a new partnership. On a personal level, I am truly honored to be your new Secretary General. It has been my privilege to have worked with Jessie in the past in other related dairy industry affairs. Having seen Jessie in action, I am fully aware that we, Holstein Canada and I have big shoes to follow. My intention are to honor that privilege by building on the solid foundation that Jessie Weir has created in her 18 years at the previous Secretary Manager. Thank you Jessie for your support and guidance throughout the transition (and beyond).

Please enjoy this first Brown Swiss newsletter. I hope you like it. If you have ideas on things you would like to see in this newsletter, please let me know. Also, if you have pictures of your cows, or pictures of yourselves at the barn, that you want to share...send them along. It's always nice to see each other.

For the pictures in this newsletter, I have to thank Liz Sullivan, a Co-Op student who did a placement at Holstein Canada. One of her assignments was to get some nice shots of cows. Thank you Liz for getting dirty at Golden Fields Farms with the Van der Steege family.

Pay attention to the website—www.browncow.ca—for an announcement regarding the location of the 2019 AGM.

Respectfully,

